



Polk County UW-Extension
100 Polk County Plaza, Suite 190
Balsam Lake, WI 54810

Phone: 715-485-8600
Fax: 715-485-8601
Dial 711 for Wisconsin Relay
<http://polk.uwex.edu/>



March, 2018

Clover Connection

Dear 4-H Families and Friends:

March is here, and with it comes the hope of spring! This month I wanted to share with you some leadership ideas for teens. Teen leaders are an important part of the 4-H program. Teens teach other youth information they learned in projects as well as role model leadership and behavior for other 4-H members. Youth leadership gives members a chance to help others and to grow and develop their own leadership skills. There is no “magic” age for a youth leader, but they should have the “respect” of the other members, have demonstrated some success in project work, or expressed an interest in helping the club and other members. Many young people who have been 4-H members for two or three years are ready to expand their leadership role within their 4-H club. These members may have shown leadership qualities by serving as an officer or committee chair or through their project work. Sometimes, teens are looking for ways to become leaders, or ideas of teen leadership roles. Here are some roles shared by an Extension Specialist for Illinois Extension Service.

Recruit two new members to the club - many young people today have very little knowledge about 4-H and know nothing about the variety of opportunities available to them through 4-H.

Serve as a mentor or big friend to a new member - many new members do not have siblings who are in 4-H or parents who are alumni. So they need help to get started on the “right foot” from the very beginning.

Suggest topics for talks/demonstrations in a particular project area - youth leaders can help generate a list of possible topics for talks or demonstrations in a project area.

Help members in developing and presenting a talk/demonstration - youth leaders might demonstrate a “well done” and a “could be improved” talk/demonstration for a group of members.

Assist members in the completion of their project records or “My 4-H Activities” sheet - youth leaders may help members individually or in small groups complete their project records.

Assist a project leader with one or more meetings for a project area - youth leaders may volunteer to help an adult project leader conduct one or more meetings in a particular project area in which they have had experience or training.

Conduct a project meeting for members - older members may feel confident enough in a project area that they would like to conduct a project meeting on their own.

Demonstrate the “face-to-face” judging concept for members - youth leaders can help members learn about judging standards, practice the questions that are often asked by the judge during face-to-face judging, and learn to evaluate their own work and progress.

Have fun trying one of these leadership roles, or come up with your own!

Chuck Prissel 
4-H Youth Development Agent

MARCH Calendar – 2018

SUNDAY	MONDAY	TUESDAY	WEDNESDAY	THURSDAY	FRIDAY	SATURDAY
				1 Ambassador Meeting Swim at Unity	2	3
4 Rabbit kickoff 2pm Polk County Justice Center Sheep kickoff mtg 2-4 Justice Center, Balsam Lake	5 Horse Project Kick-off Meeting 6:00 p.m. Unity School	6 Faculty Senate Madison Horse Education Team, Gov. Ctr. 6:30 p.m.	7	8 State 4-H Wisline, 9:00 a.m.	9	10 S.T.E.M. Saturday UW-Barron County 9:30 – 3:00 p.m.
11	12 STEM Workshops Upham Woods	13 STEM Workshops Upham Woods Horse Education Team, Gov. Ctr. 6:30 p.m.	14	15	16	17
18	19	20 Horse Education Team, Gov. Ctr. 6:30 p.m.	21	22 Quality Meats Kick-Off Mtg. & Educational Session 6:30-8:30 p.m., Unity High School	23	24
25	26 4-H Ambassador Mtg., 6:00 p.m. 4-H Leaders Board Mtg., 7:00 p.m., Gov. Ctr.	27 Horse Education Team, Gov. Ctr. 6:30 p.m. Poultry Project Workshop-Countryside 5:00 p.m.	28	29	30	31 Dairy Judging Contest

APRIL Calendar – 2018

SUNDAY	MONDAY	TUESDAY	WEDNESDAY	THURSDAY	FRIDAY	SATURDAY
1	2	3 Horse Education Team, Gov. Ctr. 6:30 p.m.	4	5	6	7
8	9	10 VIP Training, 6:30 p.m., Gov. Ctr. Horse Education Team, Gov. Ctr. 6:30 p.m.	11	12 State 4-H Wisline, 9:00 a.m.	13	14
15	16	17 Horse Education Team, Gov. Ctr. 6:30 p.m.	18	19	20	21 Performance Arts Fest-Turtle Lake Dog Project Building Clean-Up/Kick-off Mtg., 2:00-4:00 p.m.
22	23	24 Quality Meats Kick-Off Mtg. & Educational Session, 6:30 – 8:30 p.m. – Unity High School Horse Education Team, Gov. Ctr. 6:30 p.m.	25	26	27	28 RAIN DATE: Dog Project Clean-up/Kickoff Mtg., 2-4 p.m. Sheep/Goat Weigh-in, Polk County Fair Park – 9-11 a.m.
29	30 Dog Obedience, 6:00 p.m.,					

MAY Calendar – 2018

SUNDAY	MONDAY	TUESDAY	WEDNESDAY	THURSDAY	FRIDAY	SATURDAY
		1 Dog Agility/Rally, 6:30 p.m., Fair Park Horse Education Team, Gov. Ctr. 6:30 p.m.	2	3	4	5
6	7 Dog Obedience, 6:00 p.m., Fair Park	8 Dog Agility/Rally, 6:30 p.m., Fair Park	9	10 State 4-H Wisline, 9:00 a.m.	11	12 Art Bench Kick-Off- 10-noon N. Park Service St. Croix
13	14 Dog Obedience, 6:00 p.m., Fair Park	15 Dog Agility/Rally, 6:30 p.m., Fair Park	16	17	18	19 Shooting Sports Dinosaur Hunt, 9:00 – 11:00 a.m.
20	21 Dog Obedience, 6:00 p.m., Fair Park 4-H Leaders Fed. Mtg., 7:00 p.m., Fair Park	22 Dog Agility/Rally, 6:30 p.m., Fair Park	23	24	25	26
27	28	29 Dog Agility/Rally, 6:30 p.m., Fair Park	30	31 Dog Project Class – Makeup for Memorial Day – Missed Class 6:00 p.m., Fair Park		

Polk County 4-H Club Leadership- Just a Reminder about Confirming your Members

Just a reminder to check and recheck your clubs 4honline information to confirm new members. Families can join 4-H and participate in all summer activities up to April 15th. We are now using the new 2018 mailing lists so members who are not confirmed will not be receiving a ***Clover Connection***. Your assistance with keeping Polk County 4-H records up-to-date is most appreciated. As of this newsletter, members need to be confirmed by the following club leadership: Forest View, Bronco Busters, Little Butternut, Knotty Pine, South Milltown, Beaver Brook Badgers, and McKinley Vikings. If you are needing assistance please contact Colleen at 715-485-8600. Thank you!!

Monroe County 4-H Fur, Fin, & Feather Fun Show

28th ANNUAL MONROE COUNTY 4-H FUR, FIN & FEATHER SHOW, APRIL 14th, 2018 - 9:00 a.m. Sparta Barney Center, 1000 E. Montgomery Street Sparta, WI 54656. Pullorum Test Available. LUNCH WILL BE AVAILABLE. COME SEE WHAT 4-H KIDS HAVE TO SHOW! 2018 Fur, Fin, & Feather Flyer; 2018 Fur, Fin, & Feather Entry Form; 2018 Fur, Fin, & Feather Guidelines and Schedule. To enter or for more information visit <https://monroe.uwex.edu> or call 608.269.8722

JUNE Calendar – 2018

SUNDAY	MONDAY	TUESDAY	WEDNESDAY	THURSDAY	FRIDAY	SATURDAY
					1 Camp Counselor Training Camp Kiwanis	2 Camp Counselor Training Camp Kiwanis
3	4 Dog Obedience, 6:00 p.m., Fair Park Quality Meats Committee Mtg., 7:30 p.m., Polk Co Gov. Ctr.	5 Dog Agility/Rally, 6:30 p.m., Fair Park	6	7	8	9
10	11 Good Sams Camperee at Fair Park	12 Good Sams Camperee at Fair Park	13 Good Sams Camperee at Fair Park	14 Good Sams Camperee at Fair Park	15 Good Sams Camperee at Fair Park	16 Good Sams Camperee at Fair Park Pre-Fair Shooing Sports Shoot 9:00 a.m.- noon – (.22, trap, muzzle, air rifle and archery)
17 Good Sams Camperee at Fair Park	18 Dog Obedience, 6:00 p.m., Fair Park 4-H Summer Camp 4-H Horse Camp	19 Dog Agility/Rally, 6:30 p.m., Fair Park 4-H Summer Camp 4-H Horse Camp	20 4-H Summer Camp 4-H Horse Camp	21 4-H Horse Camp	22 Interstate Livestock Show AASD- Clark County 4-H Horse Camp	23 Interstate Livestock Show
24	25 Dog Obedience, 6:00 p.m., Fair Park State 4-H Conference, Madison	26 Dog Agility/Rally, 6:30 p.m., Fair Park State 4-H Conference, Madison	27 State 4-H Conference, Madison Pullorum Test Date, 5:00 – 8:00 p.m., Poultry Bldg., Fair Park	28 Polk County Clothing Revue, 6:00 p.m. State 4-H Conference, Madison	29	30

Arlington Sheep Day – March 10, 2018

Posted on **February 13, 2018** by [alissa.grenawalt](#)

Arlington Sheep Day is sponsored by the College of Agricultural and Life Sciences of the University of Wisconsin-Madison, Cooperative Extension of the University of Wisconsin-Extension, and the Wisconsin Sheep Breeders Cooperative. The agenda includes an adult and youth track. Please share with your sheep project youth and volunteers.

Registration information can be found here: [2018 Arlington Sheep Day – WSBC Annual Meeting Program Registration Final 1-15-18](#). Registrations appreciated by March 1st.

For more information on the 10th Annual Arlington Sheep Day, contact Todd Taylor (608)846-5858, toddtaylor@wisc.edu or Bernie O'Rourke (608)263-4304, borourke2@ansci.wisc.edu

For more information on the Wisconsin Sheep Breeders Cooperative Annual Meeting & Recognition Banquet or membership to the WSBC, contact Jill Alf, Executive Secretary (608)868-2505, wisbc@centurytel.net



Club Represented When the Money Gets Spent?????

The Polk County 4-H Leaders Federation Board of Directors is a very important group for the Polk County 4-H program. This board oversees the program and makes very important decisions about how and where the financial resources of the program get spent. They also provide direction for the educational programs. Is your club being represented?? Each club can send one adult and one youth member as representatives to the board. Youth have an equal voice at the table. The board meets six times a year and the meeting dates for this 4-H calendar year are:

- March 26, 2018 7:00 p.m. B.L.**
- May 21, 2018 7:00 p.m. Fair Park**
- July 16, 2018 7:00 p.m. Fair Park**
- September 24, 2018 7:00 p.m. B.L.**

Becoming a 4-H Volunteer

4-H Volunteers are valued partners in working with our youth and help make 4-H possible. In order to volunteer, previous 4-H Youth Development experience is *not* necessary. The most important qualification is a desire to work with young people and help them grow through educational experiences and gain positive life skills. Please consider sharing your time and talents!

Adult volunteers working together with youth make a difference in the lives of young people. Volunteers work with UW-Extension professionals to develop the life skills of youth members, thus benefiting the state, employers, and the economy. Volunteers extend the resources of UW-Extension as they work with staff to deliver educational programs. Volunteering is a privilege.

How does one become a volunteer?

If you have not already done so, go to Wisconsin 4HOnline and create a family profile. Instructions can be found on the <http://polk.uwex.edu> website under the 4H

enrollment tab. If your family is already in the system, **do not** create a new family profile, just make sure you are entered into your family account and check that you want to be a 4-H volunteer.

A background check will be conducted on you by the state **and you will be contacted by GIS through e-mail requesting additional information needed in order for the state to conduct the background check and begin your Volunteer in Preparation (VIP) process.**

Another step in the process, you can take the **Online Mandated Reporter Training for 4-H Volunteers.** Please see the informational sheet included in the November 2017 Clover Connection or visit the <http://polk.uwex.edu> website. You can also contact the Polk County Extension Office at 715.485.8600 for assistance.

Once the background check is successfully completed and you have completed the Online Mandated Reporter Training for 4-H Volunteers, **there is one more important step in the process; taking the Volunteer in Preparation (VIP) Training!** Trainings will be offered at the Polk County Government Center on the following dates and times:

Tuesday, April 10, 2018 at 6:30 p.m.

Please contact Colleen at 715.485.8600 or colleen.noonan@ces.uwex.edu to register for the classes. Registration is required to ensure we have enough handout materials and to be able to contact you in case the class is cancelled due to weather or low enrollment.

Name: _____

Club: _____

E-mail: _____

Cell Phone: _____



It's Winter Again!!

Yes, it is that time, again!! Winter weather can be very unpredictable and due to that some UW-Extension programs may have to be cancelled without much notice. All 4-H meetings and activities that have to be cancelled due to weather will be announced at:

<http://polk.uwex.edu/office-information/meeting-notification/> or you can call 715.485.8610 for a recorded message. Evening program cancellations will be done by 3:00 p.m.

Annual 4-H Volunteer Leader Training 2018- "VIP" Volunteer In Preparation- Your Chance to re-vamp/update your Volunteer Knowledge!!

As part of the 4-H Club Charter process, each county will be offering annual volunteer leader trainings. Each club is encouraged to have one participant attend these annual trainings to bring the information back to the clubs. The trainings will be valuable for all youth and adult leaders, and anyone is welcome to attend. This year's training again will be the **"VIP" Volunteers In Preparation** and will be offered two more times during the spring months:

Tuesday, April 10 at 6:30 p.m. at the Government Center in Balsam Lake.

This Annual 4-H Volunteer Leader Training is the same training for new volunteers- but this is your chance to update and revamp your Volunteer knowledge!! This will be an opportunity for any leader to learn more about the new training and to interact with other volunteers both new and experienced. We are looking forward to a great evening

of interactive discussions and learning from each other. Supporting 4-H volunteers in their role and strengthening the 4-H Club are top priorities for Wisconsin. It is critical that volunteers have the support, tools, and training they need to be effective in helping youth gain the most they can from their 4-H experience. These workshops will help volunteers enhance those skills

REGISTRATION IS REQUIRED!! To register for these workshops, please fill out the following information, or contact the Polk County Extension Office at 715.485.8600.

Annual Volunteer Training for 2018- "VIP"

Name: _____

Address: _____

Phone Number: _____

E-mail Address: _____

Club: _____

Return to the Polk County Government Center, 100 Polk County Plaza, Suite 190, Balsam Lake, WI 54810

Poultry Project Workshop

Countryside in Amery (554 State Road 46) will be holding a Poultry 101 on March 27 from 5:00 – 7:00 p.m. with Dr. Patrick Biggs. He will be discussing nutrition, basic care and any other topics that people want covered. We'll offer some feed specials and a drawing for 4-H kids that attend.



Polk County Quality Meats Announces 2018 Program Requirements

Youth wishing to participate in the 2018 Polk County Quality Meats Program must meet the following program requirements:

- Complete the new YQCA "Youth for the Quality Care of Animals" online training. (Formerly known as MAQA). Club organizational leaders and co-leaders have more information on YQCA.
- Attend a kick-off meeting
- Attend an educational event or sessions

New for 2018 YQCA – Youth for the Quality Care of Animals (Formerly MAQA).

- Required online course go to www.yqca.org and follow directions to register and take course – cost is \$12.
- Questions can be directed to your species chair or vice chair.

Chair – Craig Scholz, Deer Park – 612.751.3236 – 4-H Beef Committee Chair

Vice Chair – Tim Swenson, Amery – 715.491.8161 – 4-H Pork Committee Chair

Secretary – Pam Garvey, Centuria – 715.825.3229 – 4-H Goat Committee Vice-Chair

Brian Johnston, Milltown – 715.825.4496 – 4-H Sheep Committee Chair

Amy Lee, Dresser – 715.557.0758 – 4-H Sheep Committee Vice-Chair

Barry Black, Deer Park – 715.607.1108- 4-H Beef Committee Vice-Chair

Barry Elwood, Amery – 715.554.3783 – 4-H Pork Committee Vice-Chair

Tammy Brackee, Amery – 715.948.2475 – 4-H Goat Committee Chair

Quality Meats Kick-off Meeting Dates:

March 22nd – Quality Meats Kick-off Meeting and Educational sessions, 6:30 – 8:30 p.m., Unity High School

April 24th – Quality Meats Kick-off Meeting and Educational Sessions, 6:30 – 8:30 p.m. – Unity High School

Educational sessions will be held in conjunction with kick-off meetings

Needed!! Teen Volunteers to Work with National Park Rangers on Art and Nature Experiences for the Community



This summer and fall, National Park Rangers will be offering hands-on activities exploring art, nature, and environmental

science at more than a dozen community events in the St. Croix River Valley. Polk County 4-H Teen volunteers, in grades 7-12, are invited to support the Rangers at these events by interacting with the youth and families who participate in these "drop-in" hands-on programs. These free experiences will take place at the art benches on the Art Bench Trail (www.artbenchtrail.org) and each event will run between two and three hours.

Teen volunteers can sign up for one or multiple events, which are scheduled between May 22 and October 7. Sign-ups will be accepted on a first-come basis, with a maximum of three teen volunteers at each event. An end of summer kayak trip with a National Park Ranger will be your reward for volunteering your time and talents!

Events will take place in Osceola, St. Croix Falls, Somerset, Hudson, and Prescott in Wisconsin, and Carpenter Nature Center/Hastings, Bayport, and Marine on St. Croix in Minnesota.

For a complete schedule, to learn more, and to sign up, contact Anastasia Shartin at The Phipps Center for the Arts, ashartin@thephipps.org, 715.386.2305, ext. 103.

Art Bench Trail – Explore the St. Croix Valley Bench-by-Bench

www.artbenchtrail.org

Explore the St. Croix Valley Bench-by-Bench. Visit these unique works of art, each created by local youth and community partners with a local artist.





Performance Arts Festival Date Set!

Once again Polk and Barron Counties are joining up to host a Performance Arts Festival on Saturday, **April 21, 2018**, at Turtle Lake High School. Like the last several years, this event is a combined Pre-Fair performance opportunity for premiums (like the Music, Drama, and Dance



Revue of the past) and a club performance opportunity for non-premiums (like the Talent Explosions of the past) all rolled into one performance arts extravaganza!! Registration forms for pre-fair performance are available in this February newsletter and registration forms for club performances are in the February Club Organizational mailing.

Youth wishing to have their individual or duet music, dance, or speaking events as part of the 2018 Polk County Fair will in addition to registering for the April event, need to include it on their fair entry form due in June. For more information see the Polk County website or your club leader. If you have questions, please contact Chuck at Charles.prissel@ces.uwex.edu or at 715.485.8600.

SPRING WEIGH-IN FOR GOATS AND SHEEP

The Polk County Quality Meats program will host a spring weigh-in and registration for sheep and goats on Saturday, April 28, 2018 from 9:00 a.m. – 11:00 a.m. (Please note short time frame). Animals need to be castrated before this date. For complete Quality Meats Guidelines please see <http://www.polk.uwex.edu> for more information

ATTENTION!!

Please cash your fair checks!! If you have lost your fair check please contact Judy Bainbridge at 715.825.2207. It is important that you cash your 2017 check or the fair will lose that amount of money due to state regulations for 2018. Help the fair – cash your check!!!





The Polk County Fair Board is again sponsoring an outdoor sign contest to promote the Polk County Fair. The sign must be at least four feet by eight feet (4x8). You must include the Polk County Fair dates of July 26, 27, 28, and 29, 2018, St. Croix Falls, and your club name must appear on the sign.

The signs should be up by July 1st. The sign needs to be on private land - and not on the road right of way. Please contact landowners for permission.

Submit a color 8x10 photograph of your sign and the location by July 20th to:

Judy Bainbridge
2267 170th Street
Luck, WI 54853
Phone: 715.553.0801

Or

Gerianne Christensen
P.O. Box 435
Clear Lake, WI 54005
Ph: 715.553.0801

gerriannemchristensen@gmail.com

Judging will be based on creativity and advertisement value. Judging will be done by the Polk County Fair Board. Only new signs will be judged for the first place award of \$200.00 or the second place of \$100.00. All clubs that submit a photo will receive \$50.00 for one sign. Sign should be taken down by August 5th.

The Fair theme for this year's fair is:

"What's Grown" on at the Polk County Fair

State Fair Dairy Promotion Board Scholarships Available

The Wisconsin State Fair Dairy Promotion Board is offering \$1,000 scholarships to be used during the second semester of the 2018-19 school year.

Third and fourth-year college students pursuing dairy-related or food science degrees at one of Wisconsin's four-year universities are eligible to apply. Additional scholarships will be available to high school seniors planning to pursue a dairy-related or food science degree at one of Wisconsin's four-year universities or students studying in a two-year, technical school program related to dairy or food science.

Applicants will be evaluated on involvement and leadership in dairy-related activities, scholastic achievement, and career objectives. Finalists will be interviewed in mid-April, with the recipients to be recognized at the 2018 Wisconsin State Fair.

The application is available at <http://wistatefair.com/competitions/dairy-promo-board/>.

Application deadline is Friday, March 23rd.

For more information, contact Katy Katzman at 262-903-6727 or katzman@idcnet.com.

Clothing Revue and State Fair Clothing Revue Selection

June 28, 2018

6:00 p.m. – 7:30 p.m.

Polk County Government Center
Balsam Lake

Be sure to mark this day on your calendar. The Clothing Revue and the selection for the Wisconsin State Fair Clothing Revue will take place on June 28th. More detailed information will be included in upcoming "Clover Connections". Be sure you are enrolled in at least one of the following project areas: Cloverbuds, Exploring, Clothing, Crocheting or Knitting.



What is Horse Camp?

Horse Camp is a 4-day, 3-night camp for 4H Horse Project Members 4th Grade and older. It is held at the Polk County Fair Park in St. Croix Falls, WI.

Project members attend camp with their horses learning and gaining skills and confidence both in and out of the saddle. Each day Campers will attend sessions in various riding disciplines and some fun educational opportunities. Horse Camp is a wonderful time for our project members to not only improve their knowledge and skills while working with their horse but also build some great memories with other horse loving youth! Campers are guided through their week by Youth Leader Camp Counselors.

This year camp will be held June 19, 20, 21 and 22, 2018

Campers must commit to attending all 4 days of camp without exception.

Camp applications will be in the March Issue and accepted BY US MAIL ONLY until March 31st. Reminder...Horse Camp fills quickly so please don't delay.

New Cloverbud Resources Available!!

Wisconsin 4-H has created a series of new Cloverbud Learning Activities available for downloading at <http://fyi.uwex.edu/wi4hcloverbuds/activity-plans/>

Activity sheets include:

- Better Bubbles
- Build a Snack Mix
- Building a Web

- Edible Color Wheel
- Make a MiniGreenhouse
- Paper Bag Pet Parade
- Pop-up Greeting
- See the Wind
- Wake Up Your Tastebuds

Each activity has a follow-up letter that can be sent home with the youth after the event to continue the processing and applying of the learning by the parent or guardian at home!

Risk Management – It's Everyone's Business!

Risk is all around us in our day-to-day world and also present in our 4-H events and programs. While we work to minimize risk to adults and youth in 4-H, there are some steps we all can take to ensure the safest program possible.

- Reduce the Risk – modify the program or location for safety
- Transfer the Risk – Insurance is the most common method of risk transfer. Group transportation, bussing, is also transferring the risk.
- Avoid the Risk – Take steps to remove a hazard, engage in an alternative active or otherwise end a specific exposure to the risk
- Assume the Risk – decide all the necessary precautions have been taken and proceed with the event or activity.

In Polk County, all members are automatically enrolled in the American Income Life Special Risk Insurance which covers most 4-H events and activities for members. Information was shared with Club Organizational Leaders on activities that are not covered and may need additional inexpensive coverage. If you have questions, please contact Chuck at the Extension Office, 715.485.8600, or Charles.prissel@ces.uwex.edu.

Polk County 4-H Horse Camp

June 19-22, 2018

ALL APPLICANT'S MUST BE 3rd GRADE OR OLDER AND ENROLLED IN THE 4H HORSE PROJECT!

ONE FORM PER CAMPER

**CAMPERS MUST COMMIT TO ATTEND ALL FOUR DAYS OF CAMP!
REGISTRATION ACCEPTED MARCH 6-March 31**

APPLICANT INFORMATION

Name _____ Premise ID# _____
First Last

Age(as of 1/1/18) _____ Grade Level for 2017/18 _____ Male or Female

Address _____
Street

City State Zipcode

Phone _____ Email _____

Cell _____ years in project _____

Adult size shirt: Small Medium Large XLarge 4H Club _____

All 1st and 2nd year campers must attend ABC Clinic with Horse on April 15 2018 for readiness evaluation.

The following information will be used to place campers into small groups during the week of camp. Please honestly evaluate your (childs) riding skills.

I am able to ride my horse independently at a walk Yes ___ No ___

I am able to ride my horse independently at a trot Yes ___ No ___

I am able to ride my horse independently at a lope/canter Yes ___ No ___

Are you able to tack your horse Independently or with help Yes ___ No ___

Number of years Riding _____

If any of the above were no , Explain _____

Horse Information

Name of Horse using for camp _____

How long have you been riding this horse? _____

ALL HORSES ATTENDING CAMP MUST HAVE A CURRENT NEGATIVE COGGINS. COGGINS MUST BE SUBMITTED PRIOR TO CAMP AND THE ORIGANL WILL BE VERIFIED UPON CHECK UP

FAMILY INFORMATION

PARENT

Name(s) _____ Relationship _____

Address _____ Phone _____

Email _____ Cell _____

In case of Emergency _____ Relationship _____

Phone _____

Parents & Guardians are welcome to visit during camp. But all adults attending to stay on the fair park grounds overnight MUST attend a 4H Adult Volunteer Training Session and have a background check. For more information please contact the extension office

Per 4H Policy, boys and girls that are not in the same family are NOT allowed to stay in the same accommodation without direct onsite parent/guardian supervision.

Where will the 4H camper be staying? (choose one)

Tent City _____ Travel Trailer _____ Undecided _____

If travel trailer do you require electrical access? (\$15 additional/ \$5 per night x 3 nights)

Whom will 4H camper be staying with? _____

REGISTRATIOS ARE DUE BY MARCH 31,2018!! APPLY EARLY AS CAMP FILLS UP QUICKLY!

REGISTRATION FEE \$75.00 PER CAMPER \$75.00= _____

ELECTRIC(FOR TRAVEL TRAILERS AND CAMPER ONLY \$15.00) \$15.00= _____

ONLY ONE ELECTRIC FEE PER TRAILER/CAMPER

EACH PARENT/NON CAMPER STAYING ON-SITE(\$25.00 INCLUDES ALL MEALS)

ADULTS # _____ X\$25.00 _____

MAKE CHECK PAYABLE TO POLK COUNTY 4H FEDERATION

PARENTS/GUARDIANS TO HELP US MAKE THIS THE BEST CAMP POSSIBLE WE NEED MANY VOLUNTEERS FOR THE FOLLOWING SPOTS (KITCHEN HELP, BARN HELP, HORSE BOWL TIMERS AND CLEANUP ON FRIDAY) WE WOULD LIKE TO SEE SOME NEW FACES HELPING TO MAKE THIS EXPERIENCE GO SMOOTHLY.

KITHCEN HELP TUESDAY _____ WEDNESDAY _____ THURSDAY _____

BARN HELP TUESDAY _____ WEDNESDAY _____ THURSDAY _____

HORSE BOWL WEDNESDAY NIGHT _____ THURSDAY _____

FRIDAY CLEAN UP _____

AMY ALI AND I LOOK FORWARD TO HAVING YOU AT CAMP THIS YEAR.

MAIL REGISTRATION AND PAYMENT TERESA HALSTROM/ POLK COUNTY HORSE CAMP
2355 113TH AVE DRESSER WI 54009



Saturday, April 21, 2018
Turtle Lake School

Demonstration Entry

Youth may enter this event and receive fair premium by signing up in Department J-31 on their fair entry form for either Barron or Polk Counties. An exhibit related to this performance may be displayed at the fair. Exceptional entries will receive ribbon recognition.

Formal Demonstration – An individual or team showing and telling an audience how to make or do something. Presents information through actions with an explanation. Has an introduction, body and conclusion followed by a time to answer questions. Open to all youth grades 3 and up. Select a topic of interest to you. Props and visual aids are encouraged. One 8-foot table will be provided. Easels and other equipment will not be provided. **TIMES:** Grades 3-5: 4-7 minute demonstration; Grades 6-8: 5-8 minute demonstration; Grades 9-13: 8-10 minute demonstration.

Action Demonstration – An individual or team sharing ideas or showing how to do a skill in an informal way. The audience may participate and ask questions throughout the demonstration. The demonstrator(s) converses with audience members who are standing around the table/area. The audience participates by talking with the demonstrator, trying things, doing, tasting, asking questions, etc. Handouts, posters, pictures can be used. Open to all youth grades 3 and up. Select a topic of interest to you. One 8-foot table will be provided. Easels and other equipment will not be provided. Youth must interact and have enough supplies for the audience to take part in the demonstration. **TIMES:** Action demonstrations for all age groups should be up to 20 minutes.

Name: _____ Club: _____

County: Barron Polk

Grade: _____ Phone: _____ Email: _____

If team demonstration, please attach a list of others involved with above information.

Check all that apply:

Formal Demonstration

Check one: Individual Team

Title: _____

Action Demonstration

Check one: Individual Team

Title: _____

Mail to: UW-Extension 4-H Youth Development, 100 Polk Plaza; Suite 190; Balsam Lake, WI 54810

Or email to: charles.prissel@ces.uwex.edu

Deadline to register: April 3, 2018



Saturday, April 21, 2018
Turtle Lake School

Speaking/Interpretive Reading Entry

Youth may enter this event and receive fair premium by signing up in Department J-31 on their fair entry form for either Barron or Polk Counties. An exhibit related to this performance may be displayed at the fair. Exceptional entries will receive ribbon recognition.

Original Speech - Open to all youth. Talks should be developed by the member who is presenting it. No posters or props may be used. The youth may speak about any topic of interest to him/her. **TIMES:** Grades 3-4: 1-2 minutes; Grades 5-6: 2-3 minutes; Grades 7-8: 3-4 minutes; Grades 9-13: 4-6 minutes.

4-H Pledge - For youth Cloverbud up to Grade 4. Cloverbuds will not receive a fair premium. Pledge must be memorized. Youth will be judged on voice, stage presence, expression, general effect, and correctness.

FFA Creed - For youth in Grades 6-9. Creed must be memorized. Youth will be judged on voice, stage presence, expression, general effect, and correctness.

Interpretive Reading - Open to all youth, individual or team. Selections may be prose or poetry, original or selected reading. If not an original, the author must be credited. Include a short introduction to your reading. Reading should NOT be memorized. Use full-sized copies of selections (not note cards). No podium will be provided. **TIMES** (Individual or Team): Grades 3-4: 1-2 minutes; Grades 5-6: 2-3 minutes; Grades 7-8: 3-4 minutes; Grades 9-13: 4-6 minutes.

Name: _____ Club: _____

County: Barron Polk

Grade: _____ Phone: _____ Email: _____

If team interpretive reading, please attach a list of others involved with above information.

Check all that apply:

Original Speech

Title: _____

4-H Pledge

FFA Creed

Interpretive Reading

Check one: Individual Team

Title: _____

Mail to: UW-Extension 4-H Youth Development, 100 Polk Plaza; Suite 190; Balsam Lake, WI 54810

Or email to: charles.prissel@ces.uwex.edu

Deadline to register: April 3, 2018



Saturday, April 21, 2018
Turtle Lake School

Musical Performance (Vocal, Dance, Instrumental)

Youth may enter this event and receive fair premium by signing up in Department J-18 on their fair entry form for either Barron or Polk Counties. An exhibit related to this performance may be displayed at the fair. Exceptional entries will receive ribbon recognition.

4-H members may enter in more than one category. Each participant should bring a copy of their music for the judge. A piano is not available in the instrumental room.

Name: _____ Club: _____

County: Barron Polk

Grade: _____ Phone: _____ Email: _____

Please attach a list of others involved in performance with above information.

Check all that apply:

Vocal, emphasis on vocal qualities and delivery

Check one: Solo Duet

Title: _____

Dance

Check one: Solo Duet

Title: _____

Vocal and Dance – emphasis 60% on vocal qualities and 40% on interpretation and choreography

Check one: Solo Duet

Title: _____

Instrumental-Other than Piano Instrument: _____

Check one: Solo Duet

Title: _____

Piano

Check one: Solo Duet

Title: _____

Mail to: UW-Extension 4-H Youth Development, 100 Polk Plaza; Suite 190; Balsam Lake WI 54810

Or email to: charles.prissel@ces.uwex.edu

Deadline to register: April 3, 2018

Horse Judging Youth Clinic

Saturday, April 7, 2018

REGISTRATION FORM

Deadline for registration is Friday, March 30, 2018.

One registration per person. Copy the form as needed.

Participant Name _____ Birthdate _____

Address _____

Phone _____ Email: _____

Payment postmarked by March 12th:

- _____ \$90/student (includes breakfast, lunch, snacks, judging binder, and a t-shirt)
- _____ \$80/student for groups of 4 or more registered and payment received together (includes breakfast, lunch, snacks, judging binder, and a t-shirt)
- _____ \$50/adult audit (includes breakfast, lunch, snacks, and judging binder)*

Payment postmarked after March 12th but before the deadline:

- _____ \$100/student (includes breakfast, lunch, snacks, judging binder, and a t-shirt)
- _____ \$60/adult audit (includes breakfast, lunch, snacks, and judging binder)*

Payment received the day of the clinic or postmarked after the deadline:

- _____ \$110/student (includes breakfast, lunch, and snacks)
- _____ \$70/adult audit (includes breakfast, lunch, and snacks)*

**Adults who stay to observe will be asked to pay this fee.*

Make check payable to: **University of WI-River Falls**

Amount Enclosed \$ _____

Mail to: Animal Science Horse Youth Judging Clinic
University of Wisconsin-River Falls
410 South Third Street
River Falls, WI 54022

Date Received: _____

Special arrangements will need to have prior approval. Contact Dr. Casie Bass at casie.bass@uwrf.edu or 715-425-4769.

HOLD HARMLESS/INSURANCE CLAUSE/PHOTO RELEASE

I understand that the University may take photographs of clinic participants, audience, and activities. I agree that the University of Wisconsin-River Falls shall be the owner of and may use such photographs relating to the promotion of future clinics. I relinquish all rights that I may claim in relation to the use of said photographs.

If your son, daughter or ward will be under the age of 18 years while at our clinic, it is our policy to secure your consent for medical treatment. In case of illness or injury, permission is granted to treat the participant at an appropriate medical facility. By signing below you are giving your consent in advance for medical treatment.

Furthermore, as a participant in the clinic, I hereby state that I am aware of and accept the risk inherent in the program activity. The undersigned does hereby agree to hold harmless and indemnify the State of Wisconsin, the Board of Regents of the University of Wisconsin system, and the University of Wisconsin-River Falls, their officers, agents and employees, from any and all liability, loss damages, costs or expenses which are sustained, incurred or required arising out of the actions of my dependent in the course of the clinic. Note that UW-System insurance is a primary insurance policy with limited accident coverage of \$1,000.

This form must be completed and returned with the registration.

Parent/Guardian (if under 18) _____ Phone # _____

Insurance Provider _____ Policy Number _____

Signature of Enrollee

Date

Signature of Parent or Guardian, if under 18

Date

WISCONSIN STATE FAIR

Presented By  U.S. Cellular

Dear Junior Beef, Dairy, Goat, Poultry, Rabbit, Sheep and Swine Exhibitors,

NEW FOR 2018! Wisconsin State Fair is pleased to announce implementation of a new national certification program available for youth. Completion of this informative and educational program, “Youth for the Quality Care of Animals” (YQCA), will be required for all youth who exhibit animal projects (Beef, Dairy, Goats, Poultry, Rabbits, Sheep and Swine) at the 2018 Wisconsin State Fair Junior Shows. This interactive program will reinforce current animal industry best practices and awareness of critically important animal messaging. This special program features interspecies information designed to supplement project education for Beef, Dairy, Goat, Poultry, Rabbit, Sheep, and Swine exhibitors.

YQCA was developed and funded by national livestock industry professionals, extension specialists and livestock show managers. YQCA certification is rapidly being endorsed and implemented for exhibitors at Fairs and animal exhibitions across the country. It replaces the National Pork Board’s Youth Pork Quality Assurance (PQA) program and Wisconsin’s Meat Animal Quality Assurance (MAQA) program.

Course content includes an age appropriate module from each of the following program areas:

- Animal Welfare (basic needs, proper animal handling, biosecurity, etc.).
- Food Safety (medications, medicated feeds, withdrawal times, avoiding residue, etc.).
- Character Education (ethics, goal setting, career exploration, etc.).

YQCA certification is offered in two formats to meet varied learning styles and active schedules:

- Online – Fee: \$12/exhibitor/year Available 24/7 at www.yqca.org

-OR-

- Face-to-Face/Trainer-Led – Fee: \$3/exhibitor/year

To find a list of face-to-face/trainer-led sessions in Wisconsin, create an account on www.yqca.org.

Under the appropriate age in “Course List” choose “Instructor-Led Training”. A drop down box will list all current available options for Wisconsin.

Both certification types (Online and Face-to-Face) must be paid online with a credit card. The nominal course fees (\$12/\$3) ensures the course content/learning platform stays current.

Annual certification should take approximately 60 minutes. After viewing each module, the exhibitor must successfully pass a quiz which demonstrates content mastery. Youth wishing to exhibit in the 2018 Wisconsin State Fair Junior Shows **must** provide his/her YQCA certification number when entering by the entry deadline on **June 6, 2018**. Youth who do not provide a YQCA certification number, or did not pass the YQCA modules for the current calendar year will not be eligible to participate in the 2018 Wisconsin State Fair Junior Shows.

If you have any questions on this exciting new program, please email entryoffice@wistatefair.com. We look forward to seeing you at the 2018 Wisconsin State Fair, August 2 – 12!

Wisconsin State Fair Agriculture Department

County Fair Judges Training Webinar
March 26, 2018 " 6:00 - 8:00 PM

All communication will be via email.
After you are registered, the PowerPoint
and the call-in information for the
program will be emailed to you.



Registration Form

Please print all information neatly.

Name _____

Address _____

Phone _____

E-Mail _____

Registration fee is \$15.00 per person. Please make your check payable to: UW-Extension. Please mail your completed registration and check to the address below so that we receive them by March 16.

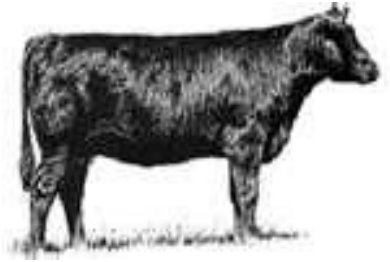
Lynn Pfeiffer
436 Lowell Center
610 Langdon Street
Madison WI 53703

If you have questions, please contact Pam Hobson at (608) 262-9605 or pamela.hobson@ces.uwex.edu

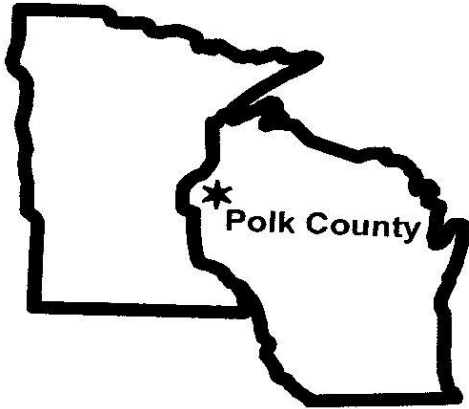
An EEO/AA employer, University of Wisconsin Extension provides equal opportunities in employment and programming, including Title IX and ADA requirements. Please make requests for reasonable accommodations to ensure equal access to the training before the registration deadline.



2018



INTERSTATE LIVESTOCK YOUTH SHOW SHEEP-BEEF-GOAT



**POLK COUNTY FAIR PARK
800 LOUISIANA AVE
ST. CROIX FALLS, WI**

* **FRIDAY JUNE 22**

Sheep and Goat camp

4:00 - 6:00 PM

Picnic at 6

Swine Showmanship Clinic

At 7 pm Friday

**A FUN AND EDUCATIONAL
EXPERIENCE FOR YOUTH
OF ALL AGES**

* **SATURDAY JUNE 23**

June 23 Show Day Schedule

Registration 7:30 – **Ends at 8:30**

Livestock Quiz 8:30

Judging Contest 9:30

Weigh-In 10:30

Livestock Shows Begin – 12:00

Starting with Showmanship first

Lunch on Grounds

**Early Registrations due June 16.
Entry fee \$10 per entry.**

**Late Entry June 17 to 8:30am
June 23. Entry fee \$20 per entry.
Camping & hook ups available.**

Like us on Facebook

For More Information Call or E-mail:

**** E-MAIL ALL ENTRIES TO**

interstatelivestock@gmail.com

Charlene Strabel (715) 349-5935 strabel@sirentel.net

Sheep – Debbie Petzel (612)578-1528 dspetzel@gmail.com

Brian Johnston (715)553-0179 mabeef@hotmail.com

Goats – Jeanne Alling (715)553-2488 jeannealling77@gmail.com

Beef – Craig Scholz (715)269-5403 ckscholz6869@hotmail.com



Wisconsin 4-H Foundation- Now Accepting Scholarship Applications

The Wisconsin 4-H Foundation will award more than \$10,000 in scholarships to outstanding Wisconsin students pursuing higher education in 2018. To be considered for financial support, applications must be received by the Wisconsin 4-H Foundation **via email by March 15, 2018, 5:00 pm.**

Wisconsin 4-H Foundation scholarships are awarded to students based on demonstrated personal growth, development and leadership, academic performance and future educational goals.

To be eligible for Wisconsin 4-H Foundation scholarships, students must have been a Wisconsin 4-H member for at least one year; have a grade point average of at least 2.5 on a 4.0 scale, and be enrolled or planning to enroll at a university, college or technical school during the 2018-2019 academic school year.

All applications must adhere to the strict conventions outlined on the website: <http://wis4hfoundation.org/scholarships/>

Any application that does not meet these requirements (including all document names) will not be considered. All documents must be sent as PDFs (preferred method) or Word Documents as attachments to one email. Any other cloud/internet shared documents will be NOT be accepted (such as Google Docs).

Applications must be emailed to scholarships@wis4hfoundation.org.

A panel of experienced youth advisors will screen the applications and select finalists. Applications chosen as finalists will be screened by a second panel comprised of 4-H and youth development experts. Applicants who are awarded scholarships will be notified by postal letter in May. This letter will include information about how to access the scholarship. Scholarship awardees are required to send a thank-you note to the scholarship sponsor.

Questions? Call or email the Wisconsin 4-H Foundation
608.262.1597 or info@Wis4HFoundation.org

Wisconsin 4-H & Youth Conference Polk County 4-H Delegate Application 2018!!

Wisconsin 4-H & Youth Conference will bring together young people in grades 7-10 from around the state to the University of Wisconsin-Madison campus for four days of learning and fun June 25-28, 2018. Youth will travel by bus with others from Northwestern Wisconsin. This will be a great opportunity to enhance your 4-H leadership skills, gain in-depth project or activity knowledge and meet other youth from around the state! Youth from a wide variety of backgrounds and experiences will come together to exchange ideas, form friendships and learn important skills they can use to contribute to their communities. This is an award trip for youth that show strong 4-H participation.

The cost for this experience including transportation runs over \$425.00, but the Polk County 4-H Leaders Federation has generously agreed to pay all costs except a \$25.00 fee for first time participants. (Certain seminars have additional costs which are the responsibility of the delegate. Personal spending money is delegate's responsibility. Youth may attend again with additional fees). **If for some reason youth do not attend without canceling before deadline or are sent home from the experience, the entire cost of the trip will need to be repaid to the Polk County 4-H Leaders Federation.**

Delegate Application Form- All Fields Required!!

Submit this fully completed application and a 4-H Leader Evaluation and Recommendation Form.

Name: _____	Phone Number: _____	
Parent's Name: _____	Birth Date: _____	Current Grade: _____
Address/City/Zip: _____		
4-H Club: _____	No. of Years in 4-H: _____	
Years in 4-H Youth Leadership: _____	No. of years completing 4-H Record Books _____	
No. of years working in 4-H Food Stand at the Polk County Fair: _____		
E-mail: _____	Male _____	Female _____

I give my child permission to participate in this UW-Extension Program. I realize there will be a face-to-face orientation, and I agree to help my child attend.

Applicant's Signature: _____

Parent's Signature: _____

Please Check Appropriate Line Below:

_____ 1 st Time Delegate	\$25.00 fee plus additional seminar expenses.
_____ 2 nd Time Delegate	\$75.00 fee plus additional seminar expenses.
_____ 3 rd or 4 th Time Delegate	\$Responsible for all charges but are required to complete this form for eligibility.

DO NOT SEND MONEY AT THIS TIME- YOU WILL BE BILLED WHEN SELECTED AND SEMINAR FEES DETERMINED. MONEY MUST BE PAID BEFORE THE EXPERIENCE. SEMINAR REGISTRATION WILL TAKE PLACE IN 4honline. INFORMATION WILL BE SENT TO YOU.

4-H Trips I Have Been On In the Past: (if any):

Why I want to be a delegate to State Youth Conference:

My 4-H leadership experiences:

My major 4-H projects and activities:

What is one item you plan to bring back to your club?

I have the following special medical needs: (such as allergies, diet requirements, or medications, other, etc.)

DEADLINE: This form and a Leader Recommendation form are due to the Polk County Extension Office by March 26, 2018!!!