

EASY HOT PAD USING SQUARES

EXTENSION
UtahStateUniversity

Sewing the thread of life.

SEWING AND TEXTILES

extension.usu.edu/sewing

Gaelynn Peterson, USU Extension Agent, Wayne County

Patricia Mathis, USU Extension Agent, Wasatch County

MAKE THIS EASY AND ATTRACTIVE HOT PAD IN LESS THAN AN HOUR!



Materials Needed:

- Five 9" squares of coordinating cotton quilting fabric
- One 9" square of Insulated Lining Material (Insul-Bright™ is an example)
- Coordinating thread
- Straight pins
- Scissors
- Sewing Machine
- Basic sewing skills can be found at:
extension.usu.edu/sewing/ou-files/Sewing-Skills-Beginning-Level.pdf

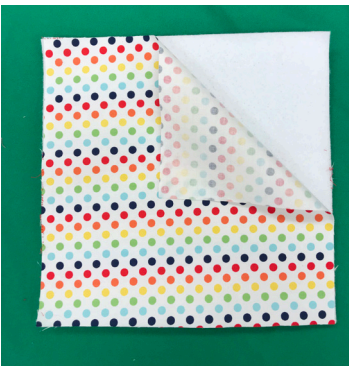
Assembly Instructions:

1. Cut out four 9" squares of cotton fabric for the front, one 9" cotton fabric square for the back and one 9" insulated lining material. There will be six 9" squares total.





2. Fold in half and press the four front squares.



3. Now, start layering the squares. The insulated lining goes on the bottom, then place the back piece right side up.



4. Now start layering the top sections. This is where the fun begins! First, place one of the folded pieces onto the back piece with the fold toward the center and the raw edges even with the outside edge. In the sample, the back piece is the multi colored dots and the first folded piece is pink with white polka dots.



5. Continue with the second (dark blue with white polka dots in the sample) and the third (pink and white chevrons in the sample) pieces. I usually put the first piece on the bottom, the second piece on the right side and the third piece on the top.



6. The fourth one is a little tricky! Lift the corner of the first piece (pink with white polka dots) and put the fourth piece (blue and white chevrons) down and then replace the first piece. Remember, all pieces should have the folded edges facing the center and the raw edges even with the outside edges.

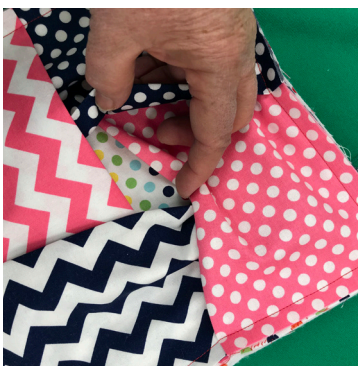


7. Pin in place on each side and sew around all four edges using a $\frac{1}{2}$ " seam allowance.



8. Clip the corners.

9. Turn the entire hot pad inside out by opening the space between the four front pieces and pulling the back and the insulated piece forward. Turn it completely inside out. Work out the corners and you have a hot pad!



Note: There is an opening where the four pieces come together in the middle that can be left open (some people like to put their hand inside when using like an oven mitt), put some zig zag stitches across the opening or use some embellishment. You could also top stitch around the entire hot pad if desired.

