



## OUR SUMMER PROGRAM GUIDANCE BEGINS JUNE 1, 2021:

- Indoor events are at 50% of room capacity up to 350 people
- Outdoor events may have up to 500 people
- Time limits have been removed for indoor and outdoor day programs
- Eating continues to be allowed outdoor
- Physical distancing six feet apart continues to be required
- Face coverings continue to be required indoors, and, are only required outdoors when 6 feet of distance cannot be maintained
- There is information on the website to support planning:
  - \* When to use Pods
  - \* Eating indoors
  - \* Operating food stands
- We honor any additional guidelines from the local County Health Department.

Remember that the best resource is always your local 4-H Educator and it is important to continue to plan activities and events with them. Our website, [4h.extension.wisc.edu/4-hfaqs-related-tocovid19/](https://4h.extension.wisc.edu/4-hfaqs-related-tocovid19/) contains up-to-date guidance and resources to help you plan.

In addition to COVID guidance, we are working to assure that save, high-quality 4-H experiences are available throughout the state.

- We have created a new webpage to share some of what is planned this summer: <https://4h.extension.wisc.edu/4-h-summer-programming/>
- We've updated some policies. Please take the time to read the policies and discuss anything that is unclear with your 4-H Educator.
- If you are planning a camp or travel, you will need to work closely with your 4-H Educator. **The process for securing facilities and buses has changed!**

We appreciate your hard work and dedication through the challenges of the last year. We thank you for your patience and ask for your continued commitment to Grow 4-H!



UW-MADISON EXTENSION

# JUNE 2021 POLK COUNTY

# CLOVER CONNECTION

## THE POLK COUNTY FAIR BOARD WOULD LIKE TO INVITE YOU BACK TO THE FAIR!

We are proud to announce the return of the Polk County Fair in 2021 to the Fair Park in St. Croix Falls. While the decision to cancel the fair last year was difficult, the decision to move forward with the fair this year has been equally challenging. There will be, undoubtedly, many obstacles to overcome, and some things may not look or feel like they have in the past, but, we are committed to keeping our attendees as safe and healthy as we can. We will be working with partners at the National, State, and Local, levels to ensure that we are incorporating as many Best Practices as possible. We are also just as committed to ensuring that everyone who attends our fair has a good time! In fact, our mascot this year Gertrude the GOAT, promises that you will have the **Greatest Of All Time...** (and everyone knows that goats don't lie...)

Not all of the details have been worked out yet, so continue to check back in with our website, [www.polkcountyfair.com](http://www.polkcountyfair.com). As we finalize plans, we will update the website as soon as we can so that you can continue to make plans as well. You may want to check our Facebook page as well.

We hope that you will plan to join us at the Fair July 29<sup>th</sup> through August 1<sup>st</sup> 2021. We also ask for your patience and understanding as we navigate the way forward. We hope that we can continue to count on your support just as we have for the last 130 years. We look forward to seeing you there!

## POLK COUNTY FAIR BOOK IS LIVE ON LINE!

By now I think most of you are aware the 2021 Polk County Fair Premium Book and Entries will be electronic this year for 4-H members and families.

This link will take you directly to the fair premium book-  
<https://polkcountyfair.com/wp-content/uploads/2021/05/Polk-County-Fair-Premium-Book-2021.pdf>

Club leaders will NOT need to sign off on these forms as they have had to do in the past when we used paper forms.

\*Cloverbud entry information have been mailed to all Cloverbud families directly and is also available online to be downloaded at <https://polkcountyfair.com/about/>

Scroll down on the page after you click the above link and you will find a link on the right hand side to download a copy for print. All Cloverbud entries will need to be mailed to Michelle Peterson at the address on the bottom of the form. Please include a picture of the Cloverbud youth for their certificate at the fair.

To access the entire Polk County Fair website please visit -  
<https://polkcountyfair.com/>



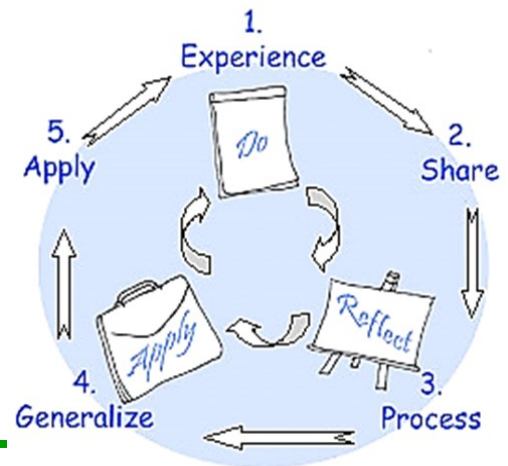
## Dear 4-H Families & Friends,

June is here and 4-H programs are moving forward and resuming many of the events of summer! Many of these activities are learning opportunities for youth through 4-H or a multitude of other experiences. Whether it be 4-H Day Camp or a family camping adventure; a livestock, dog, cat, or other animal show; training center work; shoot-offs, fly-offs, clothing revue, or any of the many other opportunities out there, youth can take the learning beyond the experience with the right guiding questions from adult or teen leaders.

Experiential learning takes place when a youth is involved in an activity, looks back at it critically, determines what was useful or important to remember, and uses this information and applies it to other situations. 4-H uses this hands-on learning approach to teach youth skills they can use for life. The five-step experiential learning model guides the process turning activities into fun learning opportunities. Providing an experience alone does not create “experiential learning”. The activity comes first and the learning comes from the thoughts and ideas created as a result of the experience. This learning does not just happen – it takes a caring adult or teen leader to ask the guiding questions to take the learning beyond the activity.

As we navigate through this summer and its Covid protocols and work together through the many summer activities available for our youth, let us also think about ways to take the learning beyond the activity, and ask those important questions. Enjoy the summer months!!

**Chuck Prissel and Eileen VanDyk**  
4-H Youth Development Staff



## MEET OUR NEW 2021 INTERN!

Hello, my name is Rachel Nelson and I will be the Polk County 4-H Extension Intern for the summer of 2021. Currently I am a junior at the University of Wisconsin-River Falls studying Agricultural Education as well as minoring in Animal Science. This internship is an opportunity that is very exciting to me as I grew up in Polk county, and was apart of 4-H in Polk county in various ways. I was an active member of the Forest View 4-H club for several year's. I participated in a variety of roles in the 4-H Officer team, entering different entries into the fair, being apart of the Polk County 4-H Dairy Project showing at the county, district and state levels with participating in different club activities through out the county. This internship is exciting to me because I get to ensure that the wonderful 4-H career that I had in Polk County will continue for other Polk County 4-H'ers in the 2021 Summer.

## POLK COUNTY 4-H CALENDAR OF EVENTS

### June

**1:** State Speaking & Demonstration Virtual Contest ENRTY DEADLINE: Received by June 1

**1:** Dog Project– Agility: Foundation 6-6:45pm, Beginners 7-7:45pm and Intermediate & Seniors 8-8:45pm., Polk County Fairground (Crops Building)

**1:** Dog Project– Rally: All levels are from 6pm-6:45pm at the Polk County Fairground (Crops Building)

**7:** Dog Project– Obedience: Beginners 6-7pm, and Showmanship 7:10-7:30pm, Polk County Fairground (Crops Building)

**8:** Dog Project– Agility: Foundation is from 6pm-6:45pm, Beginners are from 7pm-7:45pm and Intermediate & Seniors are from 8pm-8:45pm., Polk County Fairground (Crops Building)

**8:** Dog Project– Rally: All levels are from 6pm-6:45pm at the Polk County Fairground (Crops Building)

**14:** Annual Northwest 4-H Golf Classic, 10:30am Registration time at the Kilkarney Hills Golf Club

**14:** Dog Project– Obedience: Beginners 6-7pm, and Showmanship 7:10-7:30pm, Polk County Fairground (Crops Building)

**15:** Dog Project– Agility: Foundation is from 6pm-6:45pm, Beginners are from 7pm-7:45pm and Intermediate & Seniors are from 8pm-8:45pm., Polk County Fairground (Crops Building)

**15:** Dog Project– Rally: All levels are from 6pm-6:45pm at the Polk County Fairground (Crops Building)

**19:** Pre-Fair Shoot - Balsam Lake Rod and Gun Club: 9am to Noon

**19:** Aerospace Pre-Fair Fly Off , 8:30am at the Polk County Fairgrounds

**21:** State Horse Bowl Contest, Dodge County Fairgrounds: ENTRY DEADLINE: Postmarked by June 1 (June 22 is also being held)

in case Covid-19 restrictions require splitting contest)

**21:** State Hippology Contest, Doge County Fairgrounds: Entry Deadline: Postmarked by June 1(June 22 is also being held in case Covid-19 restrictions require splitting contest)

**21:** Dog Project– Obedience: Beginners 6-7pm, and Showmanship 7:10-7:30pm, Polk County Fairground (Crops Building)

**22:** Dog Project– Agility: Foundation is from 6pm-6:45pm, Beginners are from 7pm-7:45pm and Intermediate & Seniors are from 8pm-8:45pm., Polk County Fairground (Crops Building)

**22:** Dog Project– Rally: All levels are from 6pm-6:45pm at the Polk County Fairground (Crops Building)

**22:** 4-H Day Camp at Camp Kiwanis, Marine MN

**24:** 4-H Day Camp at Camp Kiwanis, Marine MN

**25-27:** WI 4-H Hunt & Dressage Show and Clinic, Sheboygan County Fairgrounds. Entry Deadline: Postmarked by June 1.

**26:** Pre-Fair Archery - St. Croix Falls Fairgrounds: 9am-Noon

**26:** Aerospace Pre-Fair Fly Off , 8:30am at the Polk County Fairgrounds

**28:** Dog Project– Obedience: Beginners 6-7pm, and Showmanship 7:10-7:30pm, Polk County Fairground (Crops Building)

**29:** Dog Project– Agility: Foundation is from 6pm-6:45pm, Beginners are from 7pm-7:45pm and Intermediate & Seniors are from 8pm-8:45pm., Polk County Fairground (Crops Building)

**29:** Dog Project– Rally: All levels are from 6pm-6:45pm at the Polk County Fairground (Crops Building)

## July

**5:** Dog Project– Obedience: Beginners 6-7pm, and Showmanship 7:10-7:30pm, Polk County Fairground (Crops Building)

**6:** Dog Project– Agility: Foundation is from 6pm-6:45pm, Beginners are from 7pm-7:45pm and Intermediate & Seniors are from 8pm-8:45pm., Polk County Fairground (Crops Building)

**6:** Dog Project– Rally: All levels are from 6pm-6:45pm at the Polk County Fairground (Crops Building)

**8:** 4-H Clothing Revue

**10:** Dog Show/Judging for Premiums (Pre-Fair) – Polk County Fairgrounds

**17:** Cat Show (more information to follow)

**17:** Championship Aerospace Fly-Off, 8:30am at the Polk County Fairgrounds

**29th-August 1st: POLK COUNTY FAIR**

---

**CLUB REPRESENTED WHEN THE MONEY GETS SPENT?** The Polk County 4-H Leaders Federation Board of Directors Is an Important Group for the Polk County 4-H Program. This Board Oversees the Program and Makes Important Decisions About How and Where the Financial Resources of the Program Are Spent. They Also Provide Direction for The Educational Programs. Each Club Can Send One Adult and One Youth Member as Representatives to The Board. Youth Have an Equal Voice at The Table. The Board Meets Six Times a Year.

## JULY 19, 2021 7PM FAIR PARK

---

**4-H ONLINE ACCESS UPDATES FOR FAMILIES & LEADERS!** Families with approved enrollment can now edit their project selections. Click on “View” near the member’s name on the “Family Member List” Screen. In the column on the left side of the screen, click on “Projects”. There is now an “Edit” button on the projects page. Clicking on Edit will open a window similar to the add projects screen which was completed during enrollment. Be sure to ADD and Save changes.

As updates are made to the new 4honline for access for families and club leaders we will continue to share when available.

---

### ZOOM 4-H ACCOUNTS AVAILABLE FOR YOUR CLUB MEETINGS OR PROJECT OFFERINGS!!

The Polk County 4-H Leaders Federation has purchased three Pro-Zoom Accounts for Polk County 4-H use. These accounts can be used for Club virtual meetings, county-wide project meetings, or county committee meetings. To access one of these accounts, please contact Matt Babcock, 4-H Leaders Federation Treasurer at [babber85@gmail.com](mailto:babber85@gmail.com) or Chuck Prissel at [charles.prissel@wisc.edu](mailto:charles.prissel@wisc.edu)

### NUMEROUS VIRTUAL PROGRAMS ARE AVAILABLE THROUGH YOUR 4-H ONLINE ACCOUNT:

Click on the “EVENTS” tab on the left side of the page. Programs currently available include: Fun with Forensic Science, Teens Eat, That’s Not What I Meant, 4-H Café for Volunteers, Pour Painting and “I Wish You All the Best” Book Group. Additional Program are added regularly.

### WHAT’S UP WITH YOUR CLUB?

Would you like your Club featured in the next Clover Newsletter? It’s simple! Write up a short article telling us just how fun your club’s event was and make sure to include a picture with the names of the members featured. Let us and other clubs know the good work you are doing in the community! To share your clubs story please email Kerry at: [kerry.hill2@wisc.edu](mailto:kerry.hill2@wisc.edu)



## POLK COUNTY FAIR SIGN CONTEST

The Polk County Fair Board is again sponsoring an

outdoor sign contest to promote the Polk County Fair. The sign must be at least 4 feet by 8 feet (4x8). You must include the Polk County Fair dates, July 28,29,30,31 & Aug. 1 at St Croix Falls, and your club name must appear on the sign. Sign should be up by July 1st, the sign needs to be on private land, not on the road right of way. Get permission from the landowner.

Submit a color 8x10 photograph and the location of your sign by July 20th to:

**Judy Bainbridge**

2267 170th St

Luck, WI 54853

Phone: 715-553-0801



Judging will be based on creativity and advertisement value and judging will be done by the Polk County Fair Board. Only news signs will be judged for the first place award of \$200.00 or the second place of \$100.00. All clubs that submit a photo will receive \$50.00 for one sign. Sign should be taken down by August 5th.

**THE FAIR THEME FOR THIS YEAR IS: A GOAT LOAD OF FUN**



## AEROSPACE PRE-FAIR FLYING/ LAUNCHING DATES



To receive premiums and ribbons in lot numbers 1-17 and 23-28, flying and launching sessions will be held at the Polk County Fair Park on Saturday, June 19 and June 26, 2021. Registration begins at 8:30 a.m. and goes until 9:30 a.m. Championship session will be held on July 17 with check-ins starting at 8:30 a.m. and flying and judging to follow. You must be register to fly! If you have questions, contact Matt Babcock at 612-308-8888, or babber85@gmail.com

To qualify for the championship model airplane and model rocket fly-off in lots 1-17 you must fly three categories: hand launch, catapult launch, and rubber powered. Lots 23-28 must fly two categories; target accuracy and parachute duration, an exhibitor must have attended one of the first two sessions and earned at least one blue ribbon in any of the model airplane or model rocket lots numbers from 1-17 and 23-28.



## INVITING ALL ADULTS OR YOUTH LEADERS INTERESTED IN HELPING TO IMPROVE AND EXPAND THE SHOOTING SPORTS PROGRAM.

As you may know there have been limited classes provided to enhance the program & involvement in the Shooting Sports project. There are also only a few adult leaders. In order to keep the project going, more assistance is needed. Changes we would like to see added are actual classes held to expand the program and to explore more of the Natural Resources area. Anyone interested or has ideas on how to improve this project, please contact Chad or Stacey Lutsey or UW – Extension office.

## WISCONSIN STATE FAIR ENTRIES

Youth Expo at the Wisconsin State Fair is made up of project exhibits and performances from youth participants. Any Wisconsin youth ages 12-19 as of January 1 may submit an entry nomination. The nomination deadline is June 3, 2021. Required Nomination Materials: Potential exhibitor must fill out his/her information, upload up to three digital photos (maximum photo size limit: 5 meg per photo) of each project being nominated and pay nomination fee of \$3 per project with a credit card. Nominated projects will be pre-screened on the basis of these materials. See suggestions at the end of the Entry Information regarding taking effective photos of projects. For more information visit the Wisconsin State Fair Website at: <https://wistatefair.com/competitions/youth-expo/>

## 4-H CLOTHING REVIEW

Clothing Review is scheduled for Thursday, July 8, 7:00 PM at the 4-H Building on the Fair Grounds. Registration information is located in this newsletter. Members must also enter the Clothing Review on their fair entry form. Exploring Project Members are also eligible for the Clothing Review. For more information please see the registration form located in the back of the newsletter.

## CALLING ALL GOLFERS!

enjoy a great day of golfing with friends, good food, and fundraising for 4-H. Please see the brochure in the 4-H newsletter. **4-H Clubs are asked to provide an item for the silent auction. This could be a gift basket or gift items from local artisans or craftsmen to combined with objects from other donors to make up a prize.**

The Northwest 4-H Golf Classic is back and ready for you to



## ATTENTION 4-H CAT PROJECT MEMBERS; PET PAL & CAVY PROJECT MEMBERS!

This year the Polk County Fair Cat Show will be held prior to the Polk County Fair, on Saturday, July 17. All cats will be vet checked at 10am and all cage decorating will be done by show time. Show time is at 10:30am. Cats are to be left in cages until show is done. Please see the Polk County Fair Premium book for cage dimensions and more details. Also, Pet Pals and Cavies will judge this day, beginning at noon.



## ATTENTION DOG PROJECT MEMBERS!

The Polk County Pre-Fair Dog Show will be held two weeks before the fair, on Saturday July 10th, at the Polk County Fairgrounds in St. Croix Falls. Registration begins at 8am and judging begins at 9am. Please mark your calendars now for the pre-fair event.

## PO-CROIX-BAR 4-H DAY CAMP EXPERIENCES!

REGISTRATION IS NOW OPEN FOR YOUTH IN 3RD-6TH GRADES. REGISTER THROUGH 4-H ONLINE EVENTS, [HTTP://V2.4HONLINE.COM/](http://v2.4honline.com/) BY JUNE 4TH!

We are excited to offer two, single day camp experiences on June 22 and June 24 at the beautiful Camp Kiwanis, in Marine MN <https://camp.northernstar.org/kiwanis-scout-camp> for youth in 3rd grade through 6th grade!! Come explore the camp where in 2022 we will again host 4-H Summer Overnight Camps! Day Camp activities this year include: riding horses, canoeing, swimming, experience nature, hiking, fishing, arts and crafts, archery and much more during this day long experience! Transportation is included via school busses with pick-up and drop off locations in each county. Cost is \$40.00 per day and includes transportation, supplies, lunch and a snack! Transportation is available with expected camp arrival at 9AM and departure at 3PM.

Busses will pick-up and drop off at: Amery, Baldwin, Balsam Lake, Barron, Four Corners, and New Richmond. Polk County 4-H youth will only pay \$20.00 as the Polk County 4-H Leaders Federation will pay the other ½ of your registration. Register now through 4honline as space is limited and your registration is not complete and assured until your check is received at the Polk County Extension Office. *We will be following 4-H/Extension COVID-19 guidelines, as well as Camp Kiwanis safety protocols. Face coverings will need to be worn on buses, indoors, and when distance cannot be maintained (the majority of activities will be outdoors and not require masks).* Please reach out to 715-485-8600 if you have additional questions.



## SHOOTING SPORTS 2021 SPECIAL ANNOUNCEMENT

Due to an unforeseen circumstance, the Archery portion

of this year's Pre-Fair Shoot is being re-scheduled. Archery will be held on Saturday, June 26<sup>th</sup>, from 9am to Noon at the Fair Park in St. Croix Falls. While this isn't ideal, it should make both days go more quickly and you get a whole extra week to practice!! So, make sure to mark your calendars, update your phones, and plan to bring your best shot to this year's Pre-Fair Shoot.

**REMEMBER: Bring your bow and at least 5 arrows.**

**AIR RIFLE, .22, &  
TRAP WILL BE HELD:**



Saturday, June 19<sup>th</sup>  
9am to Noon  
Balsam Lake Rod and Gun Club

**ARCHERY ONLY:**

Saturday, June 26<sup>th</sup>  
9am to Noon  
Fair Park, St. Croix Falls (Fairgrounds)

Remember: Bring your own Air Rifle and pellets or .22 and shells. Some .22 ammo will be available for purchase at the Shoot. If you have any questions, please feel free to reach out to any of us on the Shooting Sports Committee

**A BIG CONGRATULATIONS TO EMMA MOORE FOR RECEIVING THE  
ELIZABETH SALTER-EBY MEMORIAL SCHOLARSHIP, PART OF THE 2021  
WISCONSIN 4-H FOUNDATION SCHOLARSHIPS!**

### LOOKING FOR SOMETHING FUN TO DO TO GET OUTSIDE AND MAYBE EARN A PATCH?

POLK COUNTY SHOOTING SPORTS IS TEAMING UP WITH WISCONSIN DNR TO PROVIDE A FUN WAY TO LEARN ABOUT AND EXPLORE THE OUTDOORS AND LEARN ABOUT NATURE.

- You DO NOT need to be signed up in Shooting sports to participate. Just download the booklet or ask that one be printed for you and do the activities! This is a great way to do nature activities, scavenger hunt, games, hikes and crafts to help you explore Wisconsin's outdoors
- There are three age levels in the Wisconsin Explorer program (3-5 years, 6-8 years and 9 years and up). Three themes help kids explore different parts of the great outdoors. With nine booklets, a three-year-old can begin the program this year and participate until age eleven without repeating a booklet.
- The program is designed to be completed by an individual youth with an adult to help, if you want to earn a patch from the DNR. Groups can do the activities together but cannot earn patches this way.
- Older youth who want to work with younger youth or siblings & teach the activities, could do this in a Leadership role. It is suggested the groups be no larger than 5.
- During Covid-19, the DNR contact person is working from home. To avoid multiple calls and out of courtesy to the program director, please text (preferred), call 715-541-4242 or email: [Stacey.Lutsey@gmail.com](mailto:Stacey.Lutsey@gmail.com) if you have any questions. Questions will then be addressed, and your calls returned. We also have a copy of the patches if you want to see them.

Booklets can be found at: Wisconsin Explorer Program and choose the tab that lists the program for the age levels of (3-5 years, 6-8 years and 9 years and up.)

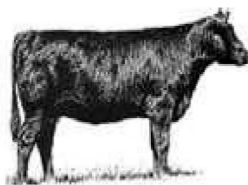
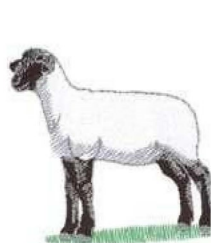
## FARM SAFETY & FARM MACHINERY CERTIFICATION COURSE SET:

The Barron-Polk County Tractor Safety Certification Program will be held June 14,15,16 and 17, 2021 at Barron High School. The program runs from 8:30 a.m. to 3:30 p.m. Monday Tuesday, and Wednesday of the week and 8:00 am to 12:00 pm on Thursday. The cost \$20 per person.



Tractor Safety Certification is designed to meet both State and Federal requirements for youth under 16 years old. The program covers 12-13 years old operating tractors or self-propelled implements on public roads under direction of their parents or guardian or for work related to their family farm operation. The Tractor Safety Certification is also for youth who are 14 and 15 years old who will be employed (or working without pay) for someone other than their own family farm. Youth attending the Tractor Safety Certification Program will learn how to safely operate a tractor, identify potentially hazardous situations, and reduce the risk of injury in those situations. Young people will be given the opportunity to practice their driving skills and safely understanding through "hands-on" learning. Each Student must successfully and safely drive a tractor and 2-wheel implement through an obstacle course.

To successfully complete the Tractor Safety Certification Program youth must be at least 12 years old at the time of the course, attend 24 hours of instructional training, pass a written examination, and successfully complete a practical driving exam which demonstrates tractor driving ability. To register for the Tractor Safety Certification Program, contact the Barron County UW-Extension Office at 715-537-6256. Or visit our website at: <http://barron.extension.wisc.edu> and look for the Tractor Safety Training Course Information and print the brochure to register and mail to the Barron County Extension Office, Barron Co. Government Center, 335 E Monroe Ave., Room 2206, Barron, WI 54812



2021

## INTERSTATE LIVESTOCK YOUTH SHOW



SHEEP - BEEF - GOAT

POLK COUNTY FAIR PARK  
800 LOUISIANA AVE  
ST. CROIX FALLS, WI

All State 4-H and Local masking and social guidelines will be followed to prevent the spread of Covid-19

A FUN AND EDUCATIONAL  
EXPERIENCE FOR YOUTH  
OF ALL AGES

Sheep and Goats will be shown out of trailers

**\*SATURDAY JUNE 19**

### Show Day Schedule

Check-in 7:30 - **Ends at 8:30**

Livestock Quiz 8:30

Judging Contest 9:30

Weigh-In 10:30

Goat Show Start - 11:00

Sheep, Beef Shows Begin - 12:00

Starting with Showmanship

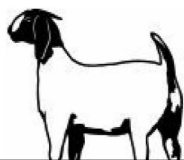
For More Information Call or E-mail:

Entries - Charlene Strabel (715) 349-5935 [strabel@sirentel.net](mailto:strabel@sirentel.net)

Sheep - Anna Strabel (952) 594-0073 [bozo\\_garden@yahoo.com](mailto:bozo_garden@yahoo.com)

Goats - Jeanne Alling (715) 553-2488 [jeannealling77@gmail.com](mailto:jeannealling77@gmail.com)

Beef - Craig Scholz (612) 751-3236 [ckscholz6869@hotmail.com](mailto:ckscholz6869@hotmail.com)



## HORSE PROJECT HAPPENINGS!

Clinic Announcements and 4H Horse Project happenings will be on the Horse Project Facebook page. If you are new to the project please request to join this group. <https://www.facebook.com/groups/polkcophorseproject>

## POULTRY PULLORUM

### TYPHOID TESTING REQUIRED

**FOR 2021 FAIR!!** There will be a Polk County Fair sponsored Pullorum Typhoid testing event on Thursday, June 24<sup>th</sup> at the Polk County Fair Park from 5:00 p.m.- 8:00p.m. Questions, please reach out to Tina Larson-Memmer; Poultry Superintendent.

## EXHIBITORS ENTERING PLANT SOIL PROJECTS!

Linda Owens will answer questions for anyone with questions on preparing crops or vegetables for display at the fair. If you have questions, please contact Linda at 715.653.2663.

## POLK COUNTY FAIR PREP AND WORK DAYS SET FOR 2021

The Polk County Fair Society has set the following work days to get ready for the 2021!! Work dates will be the two Mondays prior to the fair July 19<sup>th</sup> and 26<sup>th</sup>, and Saturday, July 24, as work/set-up days. Times will be 8:00 a.m. - 12:00 noon





This annual charity golf tournament creates resources used to train 4-H youth in leadership and development

- ✿ Scholarships
- ✿ STEM and robotic programs
- ✿ To reach out to non-4-Hers in Pierce, Polk, St. Croix and Dunn Counties
- ✿ Helps fund Ambassador programs
- ✿ Empowers 4-H youth with opportunities to explore new interest, learn new skills, and contribute to their communities

Thanks to your support, 4-H has proven results.

- ✿ Report better grades, higher levels of academic competence and an elevated level of engagement at school
- ✿ Are nearly 2x more likely to go college
- ✿ Are more likely to pursue courses or a career in science, engineering or computer technology
- ✿ Are shown to have had significantly lower drug, alcohol and cigarette use than their peers

\*According to Tufts University Study



Cut along the dotted line

#### Pierce County

Sharon Seibel  
612-309-1794  
sharon@jsmachine.com

#### Polk County

Chris Wahlstrom  
715-497-9099  
ddcwahl@gmail.com

#### St. Croix County

Jackie Kumm  
715-381-3744  
Jackie@edinarealty.com

#### Dunn County

Missy Hazen  
715-495-3326  
missyhazen@wwt.net



**Annual Northwest 4-H Golf Classic**  
1960 8th Ave, Baldwin WI 54002



## ANNUAL NORTHWEST 4-H Golf Classic

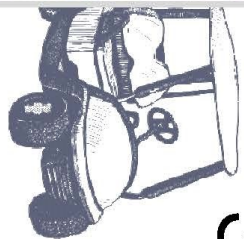
Monday | June 14 | 2021



#### **Kilkarney Hills Golf Club**

163 Radio Road  
River Falls, WI 54022  
WWW.KILKARNEYHILLS.COM





# SCHEDULE OF EVENTS

✂ Cut along the dotted line

<b>Your Name</b>
<b>Company/Sponsor Name</b>
<b>Address</b>
<b>Phone Number</b>
<b>Email</b>

## Sign up to golf

- ☐ **\$90** | I am registering to golf as an individual to play in a random foursome
- ☐ **\$360** | I am registering a foursome

## Other Player's Names


## OR Become a tournament sponsor

- ☐ **Head Sponsor | \$3,000**  
Hole sponsor, signage, print publicity, web banner, two foursomes
- ☐ **Heart Sponsor | \$1,000**  
Hole sponsor, signage, print publicity, web banner, foursome
- ☐ **Hands Sponsor | \$500**  
Hole sponsor, signage, recognition, web banner
- ☐ **Health Sponsor | \$300**  
Hole sponsor, signage, recognition

## Other Options

- ☐ **Buffet Dinner | \$30**
- ☐ **Donate a silent auction, door prize or monetary gift**  
Item and approximate value: \_\_\_\_\_

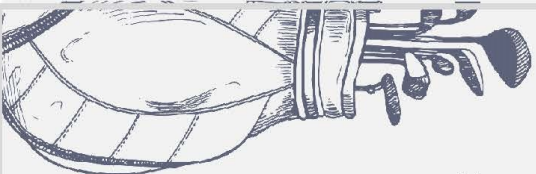

# Golf Registration

## Includes

- 18-Hole Greens Fees
- Golf Cart
- Lunch and Dinner
- Prizes
- Contests



We encourage early paid registration due to limited capacity.



Please mail check and registration form(s) payable to  
**Northwest 4-H Golf Classic**  
 1960 8th Ave, Baldwin WI 54002  
 RSVP by May 21<sup>th</sup>, 2021



## **CLOTHING REVUE Registration:** **DUE Friday, June 25**

Clothing Revue will be held Thursday, July 8 with judging starting at 7:00 PM at the 4-H Building on the Fairgrounds in St. Croix Falls. To participate please complete the following:

Mail or email this registration form to the Extension Office by June 25

Add the Clothing Revue to your fair entry form in order to receive a fair premium.

Complete the Clothing Revue Description Sheet which was emailed to you and bring it with you to the Clothing Revue.

Judging will start promptly at 7:00 PM.

Bring a mask to be worn while talking to the judge.

The Revue will be outside if the weather is good so bring your lawn chair.

In the event of rain, we will be socially distanced in the 4-H building.

NOTICE: A garment entered in Style Revue MAY ALSO be entered in classes A-F clothing for judging at the fair but must be listed as a separate entry on the entry form.

### **CLASS H: Cloverbuds Clothing Revue** – NOT FOR PREMIUM

Lot Number

- ☐ 1. Beach or bath robe
- ☐ 2. Nightgown or pajamas
- ☐ 3. Skirt, split skirt, pant skirt, gauchos
- ☐ 4. Blouse, top, or boy's shirt
- ☐ 5. Sweatshirt or t-shirt
- ☐ 6. Vest
- ☐ 7. Shorts, pants, capris, or clam diggers
- ☐ 8. Shorts/Pants and Top (sweat suit included)
- ☐ 9. Dress
- ☐ 10. Costume
- ☐ 11. Knitted or crocheted cap or scarf
- ☐ 12. Knitted, crocheted, or sewn purse (modeled with garment it accessorizes/accents)

### **Reserve Champion & Champion Cloverbuds Clothing Revue – Ribbon**

#### **CLASS I: Grades 3-5, Clothing Revue**

Premiums Same 3.00 2.50 2.25 2.00

Lot No.

- ☐ 1. Beach or bath robe
- ☐ 2. Nightgown or pajamas
- ☐ 3. Skirt, split skirt, pant skirt, gauchos
- ☐ 4. Blouse, top, or boy's shirt
- ☐ 5. Sweatshirt or t-shirt
- ☐ 6. Vest
- ☐ 7. Shorts, pants, capris, or clam diggers
- ☐ 8. Sweat suit or lounge wear (top and bottom)
- ☐ 9. Dress
- ☐ 10. Costume
- ☐ 11. Garment for another individual (modeled by "other")
- ☐ 12. Knitted or crocheted garment
- ☐ 13. Knitted, crocheted, or sewn purse (modeled with garment it accessorizes/accents)
- ☐ 14. Purchased outfit (include written card on cost, care, plan for wearing, why garment was chosen)
- ☐ 15. Combination of purchased/sewn outfit or altered/embellished purchased outfit (include written card on cost, care, plan for wearing, and why chosen)
- ☐ 16. For \$15 or less, put together an outfit purchased from a thrift store.

**Reserve Champion and Champion Grade 3-5 Clothing Revue – Ribbon**

**CLASS J: Grades 6-8, Clothing Revue**

Premiums 3.00 2.50 2.25 2.0

- \_\_\_ 1. Beach or bath robe
- \_\_\_ 2. Nightgown or pajamas
- \_\_\_ 3. Skirt, split skirt, pant skirt, gauchos
- \_\_\_ 4. Blouse, top, or boy's shirt
- \_\_\_ 5. Sweatshirt or t-shirt
- \_\_\_ 6. Vest
- \_\_\_ 7. Shorts, pants, capris, or clam diggers
- \_\_\_ 8. Shorts/Pants and Top
- \_\_\_ 9. Workout, lounge wear, or sweat suit (pants and top)
- \_\_\_ 10. Dress
- \_\_\_ 11. Costume
- \_\_\_ 12. Garment for special occasion, semi-formal
- \_\_\_ 13. Garment for another individual (modeled by "other")
- \_\_\_ 14. Knitted or crocheted garment (top and bottom)
- \_\_\_ 15. Knitted, crocheted, or sewn purse (modeled with garment it accessorizes/accents)
- \_\_\_ 16. Purchased outfit (include written card on cost, care, plan for wearing, why garment was chosen)
- \_\_\_ 17. Combination of purchased/sewn outfit or altered/embellished purchased outfit (include written card on the cost, care, plan for wearing, and why chosen)
- \_\_\_ 18. Garment/Gear to be worn for hunting, fishing or camping
- \_\_\_ 19. For \$15 or less, put together an outfit purchased from a thrift store.

**Reserve Champion and Champion Grade 6-8 Clothing Revue – Ribbon**

**CLASS K: Grades 9-13, Clothing Revue**

Premiums 3.00 2.50 2.25 2.00

- \_\_\_ 1. Beach or bathrobe
- \_\_\_ 2. Nightgown or pajamas
- \_\_\_ 3. Skirt, split skirt, pant skirt, gauchos
- \_\_\_ 4. Blouse, top, or boy's shirt
- \_\_\_ 5. Sweatshirt or t-shirt
- \_\_\_ 6. Vest
- \_\_\_ 7. Shorts, pants, capris, or clam diggers
- \_\_\_ 8. Shorts/pants and top
- \_\_\_ 9. Workout, lounge wear, or sweat suit (pants and top)
- \_\_\_ 10. Dress
- \_\_\_ 11. Coat, outerwear, or jacket
- \_\_\_ 12. Costume
- \_\_\_ 13. Garment for special occasion, semi-formal or formal
- \_\_\_ 14. Garment for another individual (modeled by "other")
- \_\_\_ 15. Garment made from non-traditional material (duct tape, etc.)
- \_\_\_ 16. Knitting or crocheted garment (top and bottom)
- \_\_\_ 17. Knitted, crocheted, or sewn purse (modeled with garment it accessorizes/accents)
- \_\_\_ 18. Purchased outfit (include written card on cost, care, plan for wearing, why garment was chosen)
- \_\_\_ 19. Combination of purchased/sewn outfit or altered/embellished purchased outfit (include written card on cost, care, plan for wearing, and why chosen)
- \_\_\_ 20. Garment/Gear to be worn for hunting, fishing or camping
- \_\_\_ 21. For \$15 or less, put together an outfit purchased from a thrift store.

**Reserve Champion and Champion Grade 9-13 Clothing Revue – Ribbon Reserve Grand Champion and Grand Champion Clothing Revue – Rosette**





**Got A Laptop  
You're Not Using?**

# Donate

Your Old  
**Laptop**

The Robotics Project Committee is looking for donations of 5 laptops. These laptops will need to be able to run Windows XP, or newer, and operate decently well. If you have a laptop you would like to donate please contact Shirley Miller-Frey at [smillerfrey@gmail.com](mailto:smillerfrey@gmail.com)

**ATTENTION  
3RD-6TH  
GRADE  
4- H  
CAMPER!**

**June 22 OR June 24**  
**9AM-3PM**  
*arrival departure*

**PO-CROIX-BAR  
4-H SUMMER  
DAY CAMP**  
**AT CAMP KIWANIS  
MARINE, MN**

**Register by June 4!**

**\$40**

*includes transportation,  
supplies, lunch and a snack*



**Bus Stops**  
Amery, Baldwin  
Balsam Lake  
Barron, Four Corners  
New Richmond

**Activities include:**

horse riding  
canoeing  
swimming  
experiencing nature  
hiking  
fishing  
arts and crafts  
archery  
and much more



**REGISTER TODAY!!!**

for registration visit [wi.4honline.com](http://wi.4honline.com)  
sign-in, click events, look for the camp logo, and register!  
**SPACE IS LIMITED CHECK MUST BE  
RECEIVED TO HOLD YOUR SPOT**  
registration/money due June 4 to your extension office.

Presorted Standard  
U.S. Postage Paid  
Nonprofit  
Permit No. 9  
RETURN SERVICE REQUESTED

University of Wisconsin - Extension  
Polk County Office  
100 Polk Plaza, Suite 190  
Balsam Lake, WI 54810  
Phone: (715) 485-8600



The University of Wisconsin-Extension provides Title IX requirements, which include affirmative action and equal opportunity in education, programming and employment for all qualified persons regardless of race, color, gender, disability, religion, national origin, ancestry, age, sexual orientation, pregnancy, marital or parental status, arrest or conviction record or veteran status.

Requests for reasonable accommodations for disabilities or limitations should be made prior to the date of the program or activity for which it is needed. Please do so as early as possible prior to the program or activity so that proper arrangements can be made. Requests are confidential (ADA requirements).

UNIVERSITY OF WISCONSIN-MADISON  
POLK COUNTY  
**Extension**

