

_____ Polk County _____

Clover Connection



February 2024

A decorative graphic for the 2024 4-H Clover College event. The background is light blue. At the top left is a large orange flower with a yellow center. At the top right is a rainbow. In the center, there is a purple star, a wavy line, and the UW-Madison Extension logo (a shield with a 'W' and a green clover). Below the logo, the text '2024 4-H CLOVER COLLEGE' is written in large, pink, bold, sans-serif letters. Below this, a yellow rounded rectangle contains the text 'REGISTRATION NOW OPEN!' in purple, bold, sans-serif letters. Below the rectangle, the date and location 'SATURDAY, FEBRUARY 24, 2024' and 'CAMP ST. CROIX, HUDSON' are written in black, sans-serif letters. At the bottom, a paragraph of text describes the event: 'This fun filled day is open to all youth (4-H and non) grades K—5. The day will be filled with a variety of workshops for youth to explore different 4-H projects. Youth will take home several completed fair projects.' The bottom left features a rainbow and a yellow star, and the bottom right features a black and white striped circle with pink diagonal lines.



UW-MADISON EXTENSION

2024 4-H CLOVER COLLEGE

REGISTRATION NOW OPEN!

SATURDAY, FEBRUARY 24, 2024
CAMP ST. CROIX, HUDSON

This fun filled day is open to all youth (4-H and non) grades K—5. The day will be filled with a variety of workshops for youth to explore different 4-H projects. Youth will take home several completed fair projects.

February 2024

Sun

Mon


Tue

Wed

Thu

Fri

Sat

| | | | | | | |
|-----------------------------------|--------------------------|--|---|---|----|---|
| | | | | 1 | 2 | 3 ~4-H Meats Judging Competition |
| 4 | 5 | 6 | 7 | 8 | 9 | 10 |
| 11 ~Rabbit Kick-Off | 12 | 13 | 14 ~Registration due for Cross Stitch Workshop  | 15 | 16 | 17 |
| 18 ~Dairy Kick -Off | 19 | 20 ~Interstate Livestock Committee Meeting | 21 | 22 ~Simple Cross Stitch Workshop ~Send me your articles for the newsletter | 23 | 24 ~Clover College |
| 25 ~YQCA ~Sheep Kick-Off | 26 ~Horse Kick-Off | 27 | 28 | 29 ~Robotics Project Kick -Off | | |



February

- 3: 4-H Meats Judging Competition, Madison
- 11: Rabbit Kick Off, 2-4 p.m., Polk County Justice Center
- 14: Registration Due for Cross Stitch Workshop
- 18: Dairy Kick Off, 2-4 p.m., St. Croix Falls High School Commons
- 20: Interstate Livestock Committee Meeting, 7:00 p.m., via Zoom
- 22: Simple Cross Stitch Workshop, 6pm at the Polk County Justice Center
- 22: Deadline to get articles into the newsletter
- 24: Clover College, Camp St. Croix, Hudson
- 25: YQCA, 12:30 p.m., Polk County Justice Center - ***Must Pre-Register at yqcaprogram.org***
- 25: Sheep Kick Off, 2-4 p.m., Polk County Justice Center
- 26: Horse Kick Off, registration - 5:30 p.m., meeting begins 6:00 p.m., location TBD
- 29: Robotics Project Kick-Off, 6:30 –8, First Presbyterian Church of SCF at 719 Nevada St., SCF.

March

- 2: 4-H Leader Training! Starting at 2pm located at the Balsam Lake Lodge
- 2: 4-H Dairy Bowl Contest, UW Green Bay
- 3: Camp Counselor Training, 6:30 via Zoom
- 10: Beef Kick Off, 1-3 p.m., Polk County Justice Center
- 10: YQCA, 3:15 p.m., Polk County Justice Center - ***Must Pre-Register at yqcaprogram.org***
- 13: Registration Due for Sewing Workshop
- 14: Robotics Project Meeting, 6:30-8, First Presbyterian Church of SCF at 719 Nevada St., SCF.
- 16: Livestock Quiz Bowl & Skillathon, Madison
- 17: Goat Kick-Off, 2-4 p.m., Polk County Justice Center
- 21: Basic Sewing Workshop, 6pm at the First Presbyterian Church of Saint Croix Falls
- 22: Deadline to get articles into the newsletter
- 25: Ambassador Meeting, 6:00 p.m., Polk County Justice Center
- 25: Leader Federation, 7:00 p.m., Polk County Justice Center
- 25: Wildlife and Woods Virtual Series
- 28: Robotics Project Meeting, 6:30-8, First Presbyterian Church of SCF at 719 Nevada St., SCF.

April

- 4: Robotics Project Meeting, 6:30-8, First Presbyterian Church of SCF at 719 Nevada St., SCF
- 10: Registration Due for Finger Knitting Workshop
- 14: Swine Kick Off & Tag Pick Up, 2-4 p.m., Polk County Justice Center
- 14: YQCA, 12:30 p.m., Polk County Justice Center - ***Must Pre-Register at yqcaprogram.org***
- 18: Finger Knitting Workshop, 6pm at the Polk County Justice Center
- 22: Deadline to get articles into the newsletter
- 22: Wildlife and Woods Virtual Series
- 25: Robotics Project Meeting, 6:30-8, First Presbyterian Church of SCF at 719 Nevada St., SCF
- 27: Sheep & Goat Weigh In, 9-11 a.m., Polk County Fairgrounds

4-H Project Kick-Offs



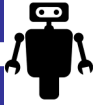
Rabbit Kick-Off: February 11, 2-4pm Justice Center

Dairy Kick-Off: February 18, 2-4pm SCF High School



Sheep Kick-Off: February 25, 2-4pm Justice Center

Horse Kick-Off: February 26, 5:30 at Unity Highschool



Robotics Kick-Off: Feb. 29, 6:30-8pm, First Pres. Church

Beef Kick-Off: March 10, 1-3pm, at the Justice Center



Goat Kick-Off: March 17, 2-4pm, at the Justice Center

Camp
Counselor
Training,
March 3rd
starting at
6:30pm via



BARRON-POLK TALENT EXPO

Do you have a talent in music, speech, dance, acting or video making? Get ready for the 2024 Barron-Polk Talent Expo!
Entries Open Through 4-H Online After January 20th!

TURTLE LAKE
SCHOOL

SATURDAY, APRIL 13TH

AMBASSADOR MEETING
WILL BE HELD ON
MARCH 25TH STARTING
AT 6PM LOCATED AT
THE JUSTICE CENTER

4-H LEADERS
FEDERATION MEETING
WILL BE HELD ON
MARCH 25TH STARTING
AT 7PM LOCATED AT THE
JUSTICE CENTER

**Interstate Livestock
Committee Meeting
will be held on
February 20th
starting at 7pm via
Zoom**

WHAT'S UP WITH YOUR CLUB?

Would you like your Club featured in the next Clover Newsletter? It's simple! Write up a short article telling us just how fun your club's event was and make sure to include a picture with the names of the members featured. Let us and other clubs know the good work you are doing in the community! To share your clubs story please email Kerry at: kerry.hill2@wisc.edu



ALL CLUB AND GROUP LEADERS

ARE INVITED TO A SESSION OF IDEA EXCHANGES AND FUN! JOIN US ON **SATURDAY, MARCH 2, FROM 2:00-4:00 P.M., AT THE BALSAM LAKE LODGE.**

A free meal will be provided thanks to the Polk County 4-H Leader Federation! Please **RSVP** to the Extension office (call 715-485-8607 or email lindsay.spindler@wisc.edu) by Friday, February 16th to make sure we plan for enough food.



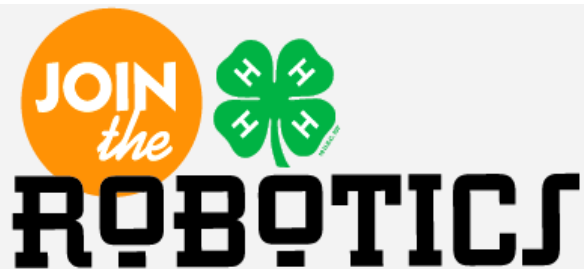
Join the 4-H Volleyball Club!

4-H kids were able to grow their volleyball skills and have fun playing on Sunday nights from November 5th - December 10th at Clear Lake High School. Some kids attended every night and

many others came when they could and did a great job! Shout out to Alyssa Fouks (4-H alumni) and Matthew Pribble for helping with the middle school kids!

Next year we will be running it again 11/10/24 - 12/15/24 for grades 5-13. Let me know if you would like to help coach, send your kids or have questions regarding what we do.

Gina Schneider 715-965-0782



Youth interested in Robotics who are Explorers (9 -19 years old), this is your chance to sign up to work with Sphero Ball programming and EV3 Robot construction and programming. These workshops are intended to get a Robotics youth and their project ready for the Pre-Fair Run Off.

In these workshops youth will have a chance to work at various levels of complexities in Robotics with guidance if needed. Youth will have an opportunity to work with Sphero balls and learn to program them to run/light/sound in various complexities of courses. They will also have a chance to build EV3 Robots and learn to program them to use various sensors and run various challenges.

2024 Work Shop Dates:

- February 29th, 6:30 to 8 pm: Kick-Off & Orientation (All MUST Attend),
- March 14th, 6:30 to 8 pm, Ev3 Robotics Build Time
- March 28th, 6:30 to 8 pm, EV3 Robotics Build Time
- April 4th, 6:30 to 8 pm, Sphero Balls and EV3 Work Time
- April 25th, 6:30 to 8pm, Sphero Balls and EV3 Programming
- May 2nd, 6:30 to 8pm, Sphero Balls and EV3 Programming
- May 18th, 9am-11am, EV3 Programming
- June 1st, 9am-11am, Sphero & EV3 and Fair Discussions
- June 6th, 6:30pm-8pm, EV3 Programming
- June 29th, 9am-11am, Sphero Balls & EV3 Final Programming
- July 6th, 12:30 for Registration, 1-5pm is the Pre-Fair Run Off
- July 26th, 11am-12, All Robotics Youth Present Demonstrations at the Fair (times may be adjusted closer to fair)

All workshops and the Pre-Fair Run Off will be held at First Presbyterian Church of SCF at 719 Nevada St., SCF.

Any questions, please email Shirley at smillerfrey@gmail.com.

Grow Green!

Volunteers may remember

participating in VIP (Volunteers in Preparation), and now we are shifting to a new version of orientation called "Grow Green." This is a new, interactive orientation that is available online or available in a paper format to be read offline. It is designed to be taken whenever convenient for the potential new volunteer.

A little bit more about Grow Green:

Offered online at this link:

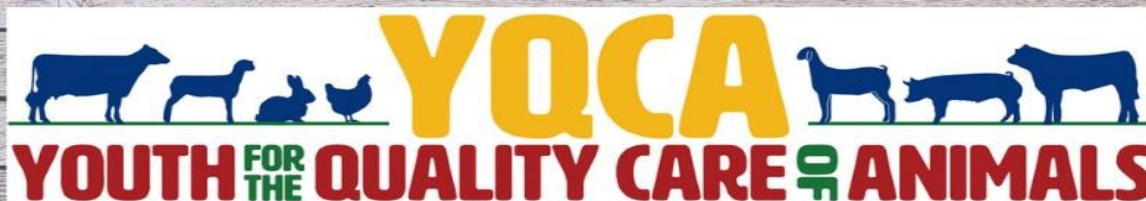
<https://4h.extension.wisc.edu/resources/volunteer-resources/training-for-volunteers/grow-green/> - just click on the green "Start the Training" button to begin

Two short, interactive modules – one module is an introduction to volunteering in Extension and Wisconsin 4-H, and a second module that is geared towards a specific volunteer role. Combined, this orientation should take around 45 minutes to complete.

Lots of practical tips – in the training modules, new volunteers will learn about some of the 4-H guiding principles (Essential Elements, Life Skills Development, Ages & Stages of Youth) and gain some really practical tips to use as a volunteer.

Start and stop at your leisure – if you start the training and need to step away, you can come back to the website using the same device you started with and it will pick up where you left off.

We are hopeful that this will make orientation more convenient and beneficial! This orientation is required for new volunteers, but it is available online for all volunteers to take as a refresher. Thank you to our volunteers for mentoring and supporting the youth in 4-H!



In Person Trainings

Polk County Justice Center

Date:

Sunday, February 25 at 12:30 pm
Sunday, March 10 at 3:15 pm
Sunday, April 14 at 12:30 pm

Register at:

yqcaprogram.org

Cost:

\$3 In Person
\$12 Web Based

4-H Volunteer Impact Study

This survey is being conducted as a part of 12 state effort to document the impact of volunteering. It will focus on three areas:

- the personal benefits of your volunteer experience
- the impact you have on the organization by volunteering
- how your volunteer efforts contribute to your community in which you live and work.

A random sample of volunteers of 1000 volunteers from each state will be surveyed. This study will be conducted through an electronic survey. If you are selected, you will receive an email to let you know you have been selected to participate.

You may be picked! If you are, please respond. We want to hear from you and learn from your volunteer experiences.



RESPOND TO THE
**4-H VOLUNTEER
IMPACT STUDY**

WHAT YOU DO MAKES A DIFFERENCE!

Wisconsin is participating in the North Central Region 4-H Volunteer Impact Study! A random sample of 1000 volunteers from each of 12 states will be surveyed to learn more about volunteer impact in our state.

YOU MAY BE PICKED!!!
If you are, please respond. We want to hear from you and learn from your volunteer experiences!!!

The poster features a blue background with two megaphones at the top corners and several hands of different colors (blue, green, pink) at the bottom corners. A white 4-H clover logo is centered at the bottom.



**Wildlife
& Woods**

Register via 4-H
Online
wi.4honline.com

**CAREERS & COMPETITION
VIRTUAL SERIES**

NOV. 27, 2023
JAN. 22, 2024
FEB. 26, 2024
MAR. 25, 2024
APRIL 22, 2024
MAY 27, 2024

To learn more about virtual learning opportunities, please visit 4h.extension.wisc.edu/vlc

The poster includes a circular illustration of a forest scene with a tree, a deer, and a rabbit. Logos for UW-Madison Extension and the Wisconsin Department of Natural Resources are at the bottom.

Join us for virtual opportunities to learn about Careers & Competitions in Wildlife & Woods! This new virtual series is open to youth in grades 6-12 and adult leaders. Come learn about what's available for our older youth in 4-H! Event registration is open now in 4HOnline. You can attend as many hour long sessions as you like!



**WI 4-H AREA ANIMAL
SCIENCE DAYS**
Save the Dates

**SHAWANO COUNTY
JUNE 18TH**

**GREEN COUNTY
JUNE 20TH**

WATCH INBOXES AND SOCIAL MEDIA FOR FUTURE REGISTRATION INFORMATION

The poster features a collage of images of various farm animals: a sheep, two cows, a pig, and a goat. Logos for UW-Madison Extension and the Wisconsin Department of Natural Resources are at the bottom.



**4-H
MEATS JUDGING
CONTEST
FEB. 3, 2024**

Meat Science & Animal Biologics Discovery
UNIVERSITY OF WISCONSIN-MADISON

The poster has a green background with a large green circle in the center containing the text. It is decorated with white and yellow dots and a megaphone icon at the bottom right. Logos for UW-Madison Extension and the Wisconsin Department of Natural Resources are at the bottom.



Interstate Livestock Show

SAVE THE
DATE FOR
THIS YEAR'S
SHOW! JUNE
22, 2024



Interested in contributing your ideas to the 2024 Interstate Livestock Show? Join our Zoom meeting on **February 20th, 2024 at 7:00 pm**. We are looking for both youth and adult voice to shape this year's show!

Zoom link: <https://go.wisc.edu/xc9heu>
Contact Lindsay for more details at lindsay.spindler@wisc.edu

SAVE THE DATE: STATE 4-H DAIRY QUIZ BOWL CONTEST

MARCH 2, 2024

UW GREEN BAY CAMPUS

MORE INFORMATION AND HOW TO REGISTER WILL BE COMING SOON

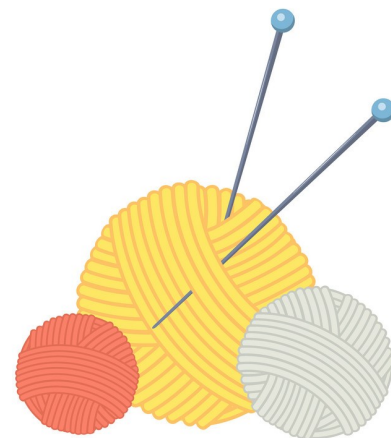


INTERESTED IN CROCHETING/ KNITTING/ SEWING/HOME FURNISHINGS?

We are hosting several workshops this year for youth to sample these 4-H Project areas. If you have some skills in any of these areas and want to improve your proficiency, join us, we can help you grow your skills. The Workshops are for Explorer and Older youth and Must be registered in advance. Each Workshop will have a \$3.00 Materials fee which will be collected at the Workshop. Registration is separate for Each workshop. You are welcome to sign up every one of them.

Workshops

- **Simple Cross Stitch:** February 22nd, Thursday 6:00pm to 7:30 pm at the Balsam Lake Justice Center meeting room. We will make a hanging ornament. (Registration due by February 14th)
- **Basic Sewing:** March 21st, Thursday 6:00 pm to 7:30 pm at the First Presbyterian Church of SCF. We will be making a small pillow. (Registration due by March 13th)
- **Finger Knitting:** April 18th, Thursday 6:00 pm to 7:30 pm at the Balsam Lake Justice Center meeting room. We will be making a scarf. (Registration due by April 10th)
- **Blending of two skills:** May 30th, Thursday 6:00 pm to 7:30 pm at the Balsam Lake Justice Center meeting room. Project = TBD. (Registration due by May 22nd)



To Register, please email Shirley Miller-Frey, smillerfrey@gmail.com: Youth Name, Youth Grade, Name of your 4-H Club, Parents Name and Contact Email and which Workshop you are signing up for.

Save the Dates

STATE 4-H LIVESTOCK EVENTS

**4-H MEATS JUDGING CONTEST
FEB. 3, 2024**

**SKILLATHON AND QUIZ BOWL
MARCH 16, 2024**

**BOTH EVENTS HELD AT THE
UW MADISON CAMPUS**



Extension
UNIVERSITY OF WISCONSIN-MADISON



**BONE LAKE
BEAVERS 4-H
CLUB HAVING
SOME FUN AT
SKATE CITY!**



Clover College: Session Descriptions

Saturday, February 24, 2024 9:00 AM - 2:30 PM

Acrylic Painting Class (1 hr 55 minutes)

Stephanie Weber

The painting class for youth where I'll instruct on a pre-chosen seasonal painting design, step by step, as they follow along.. Grades 3-5 Class Limit: 20

Talk'n Dogs (55 minutes)

Deb Beyer, Jean Gustafson, Greta Gustafson w/Bert, the show dog

In this class, we will learn about dog breeds and their intended jobs, how dogs "talk" to us and how we should and should not talk to them, and we will practice some dog obedience training exercises with pretend dogs. You will also get to meet a real, live 4-H show dog.

Grades K-5 Class Limit: 15

Cricut Crafts (55 minutes)

Lindsay Spindler

Have you ever wanted to make custom designs for t-shirts, stickers, and more? Come learn more about making your very own, one of a kind, designs using the Cricut machine.

****Youth will need to bring a shirt to do an iron-on design.****

Grades 3-5 Class Limit: 8

SpringTime in the Woods (55 minutes)

Mike Lindley

Teach kids about turkey hunting, shed deer antler hunting and other cool things to see in the woods in the springtime.

Grades K-5 Class Limit: 10

Treats for Our Feathered Friends (and us!) (55 minutes)

****Allergy note: peanut butter will be used in this class**

Molly Ziegler

We will be creating treats for our bird friends by making a pinecone bird feeder. We will also make a treat for us by making bird nest cookies.

Grades K-5 Class Limit: 15

Leathercraft (55 minutes)

Heidi Wagner

Come and learn the art of leather stamping and design and bring home a project for the fair.

Grades K-5 Class Limit: 10

Wild Mammals of Wisconsin (55 minutes)

Deb Beyer

Learn about the wild mammals that live all around us, but we often do not get to see. See and touch wild mammal furs, and meet some live, 4-H project mammals that are related to wild ones.

Grades K-5 Class Limit: 15

Sphero Balls! Fun with Robotics! (55 minutes)

Abby Bateman

Cloverbuds will explore and use ipads connected to Sphero balls. They will work on controlling the Spheros in multiple ways.

Grades K-2, Class Limit: 10

Quilling Basics (55 minutes)

Michelle Johnson

Choose from 4 different quilled creations: Fish, Hedgehog, Seahorse, or Dragonfly. This quilled creation will be displayed on a canvas background. Canvas will be decorated by the participant using water colors. Grades K-5, Class Limit: 10

Build Your Own Puppet Show (55 minutes)

Bridget Lentz

Make a puppet and practice putting together a story with others.

Grades K-5 Class Limit: 12

Hula Hoop Rugs (1 hr 55 minutes)

Jennie Bazille

Join the fun! Learn to make a small rug using a hula hoop and old t-shirts.

Grades K-5 Class limit: 15

Woodworking - Tic Tac Toe Board (1 hr 55 minutes)

Anne Wittman

Create your own hand crafted tic tac toe board using woodworking tools with a skilled 4-H woodworking expert!

Grades K-2 Class Limit: 8

Woodworking - Book Rest (1 hr 55 minutes)

Anne Wittman

The perfect woodworking project for Book Lovers. Not only do they look attractive sitting on your end table or night stand, but useful too!

Grades 3-5 Class Limit: 8

Just in "Time" to "Gear" Up! (55 minutes)

Rob and Tara Brown

Did you know that not all clocks need batteries! In this hands-on session, students will learn about the power of gears and will assemble a gear clock kit to take home for the Fair! Limited to youth in 3rd-5th grade only.

Grades 3-5 Class Limit: 8

Scrapbooking I Record Book Pages (55 minutes)

Carole Schurtz

Bring in 4-6 of your favorite 4-H photos (4x6) and we will show you how fun it can be to scrapbook them for your record book or just for fun.

Grades K-5 Class Limit: 12

Bookmark Crafts (55 minutes)

Cami Curtis and Ella Curtis

Use your creativity to design a variety of make and take bookmarks. Keep them for yourself or make them to give as gifts.

Grades K-5 Class Limit: 10

Jade Plant Propagation (55 minutes)

Jackie Kumm, Judy Lacy & Kathy Adamek

Youth will learn how to take cuttings to divide and grow their own Jade plant. Jade is a succulent is an indoor plant that you can watch multiply.

Grades K-5 Class Limit: 15

Sew a Library Bag (55 minutes)

Theresa Douglas

You'll sew a lined canvas drawstring bag, practice stitching straight, ironing seam allowances, threading a drawstring, and installing grommets. All bags will be green canvas with options for lining fabric, or you can bring 1/2 yard of the lining fabric of your choice.

Grades K-5 Class Limit: 8

Optical Illusion Drawing (55 minutes)

Becky Olson

This unique drawing technique using shapes, colors & patterns in special ways creates drawings that appear to be lifting off the page. Learn to trick your eyes and brains to see things differently!

Grades K-5. Class Limit: 15

Clover College

Saturday, February 24, 2024 9:00 AM - 2:30 PM

Camp St. Croix, Hudson

Open to all youth grades K-5th

Registration begins at 8:30AM/Sessions at 9:00AM

Registration Fee: \$20.00 / youth + optional \$10.00 lunch



UW-MADISON EXTENSION

2024 Clover College Participant Registration

Name _____ Email _____

Address _____ Telephone _____

Grade _____ Parent (s) name _____

Gender _____ Health Concerns: (allergies, etc.) _____

Emergency contact name _____ Emergency contact telephone _____

I am currently a 4-H member: ____ Yes ____ No Club Name _____

I require an accommodation for a disability to participate in this program: ____ Yes ____ No

Optional provided lunch or bring a sack lunch. Registration \$20.00 per youth. Lunch \$10.00 per youth.

Amount enclosed: _____ (\$20 or \$30) Check _____ Cash _____ Club Paying: _____

_____ Fee Waiver - please email sky.holt@wisc.edu or call Sky 715-928-9836 with your request.

Registration Deadline: Feb. 9, 2024 No refund for cancellations will be issued after the deadline.

Make check payable to: St. Croix County 4-H Leaders Association

Return to: SCC 4-H, Attn: Clover College, 1960 8th Ave, Suite 140, Baldwin WI 54002

Please rank your TOP TEN choices (1 highest to 10 lowest). First-come / first-serve for session choices. All youth will attend 3-5 sessions. Limited participants in each session.

_____ *Acrylic Painting Class (G 3-5)* _____ *Talk'n Dogs (K-5)* _____ *Cricut Crafts (G 3-5)*

_____ *SpringTime in the Woods (K-5)* _____ *Treats for Our Feathered Friends (and us!) (K-5)*

_____ *Leathercraft (K-5)* _____ *Wild Mammals of Wisconsin (K-5)* _____ *Sphero Balls! Fun with Robotics! (K-2)*

_____ *Quilling Basics (K-5)* _____ *Build Your Own Puppet Show (K-5)* _____ *Hula Hoop Rugs (K-5)*

_____ *Woodworking - Tic Tac Toe Board (K-2)* _____ *Woodworking - Book Rest (3-5)*

_____ *Just in "Time" to "Gear" Up! (G 3-5)* _____ *Scrapbooking/Record Book Pages (K-5)* _____ *Bookmark Crafts (K-5)*

_____ *Jade Plant Propagation (K-5)* _____ *Sew a Library Bag (K-5)* _____ *Optical Illusion Drawing (K-5)*

Yes ____ No ____ I am available to help with sessions at Clover College on February 24, 2024:

Name: _____

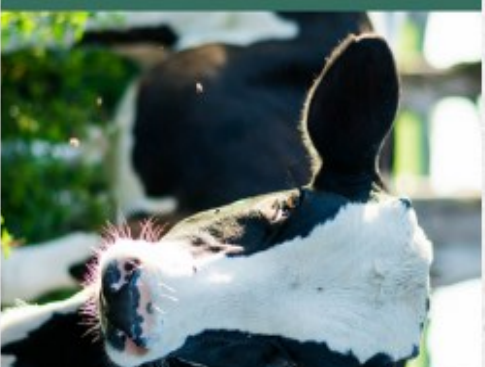
Rabbit Kick Off Meeting

Sunday, February 11
2:00-4:00 pm
Polk County Justice Center
Balsam Lake
Come find out more about the rabbit project and prepare for the coming year. Do not bring rabbits to this meeting.



Dairy Kick Off Meeting

Sunday, February 18th
2:00-4:00 p.m.
St. Croix Falls High School Commons



SHEEP KICK OFF MEETING

SUNDAY, FEBRUARY 25
2:00-4:00 PM
POLK COUNTY JUSTICE CENTER



YQCA session to be offered at 12:30 before the kick off for any youth needing their requirement. Please pre-register at yqcaprogram.org

Horse Kick Off Meeting

MONDAY, FEBRUARY 26TH
REGISTRATION - 5:30 PM
UNITY SCHOOL DISTRICT PAC



JOIN US FOR OUR ANNUAL 4-H PROJECT KICK OFF MEETINGS

BEEF KICK OFF MEETING

Sunday, March 10th
1:00-3:00 p.m.
Polk County Justice Center
YQCA session to be offered at 3:15 following the kick off for any youth needing their requirement. Please pre-register at yqcaprogram.org



In Person Trainings
Polk County Justice Center

Date:

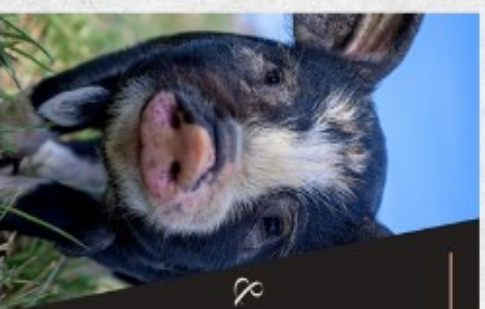
Sunday, February 25 at 12:30 pm
Sunday, March 10 at 3:15 pm
Sunday, April 14 at 12:30 pm

Register at:
yqcaprogram.org

Cost:
\$3 In Person
\$12 Web Based

Swine Kick Off Meeting & Tag Pick Up

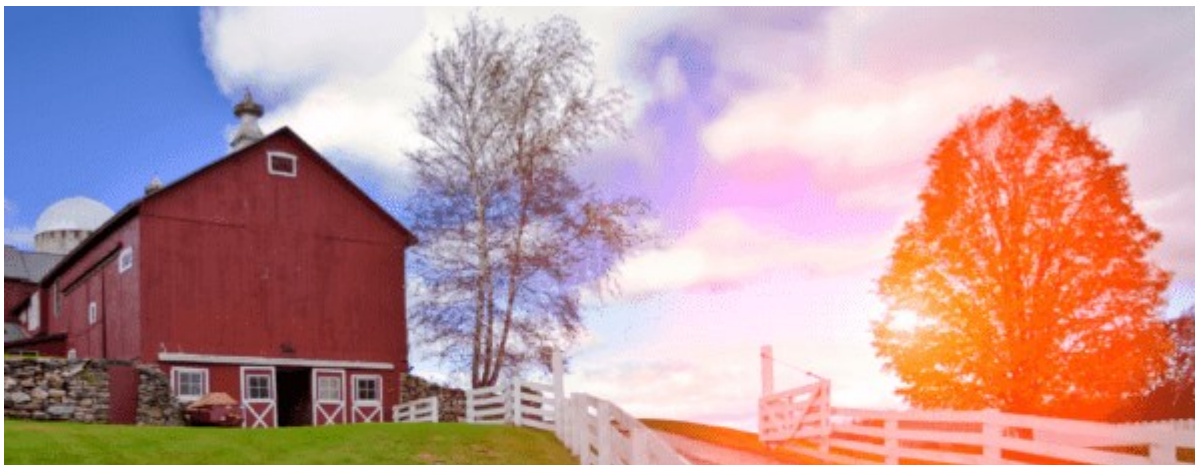
Sunday, April 14
2:00-4:00 pm
Polk County Justice Center



GOAT KICK OFF MEETING

SUNDAY, MARCH 17
2:00-4:00 PM
POLK COUNTY JUSTICE CENTER





Wisconsin Rural Opportunities Foundation, Inc Premier Scholarship

The Premier Scholarship will open on January 5th and close on Wednesday, March 6th

This year, the Wisconsin Rural Opportunities Foundation will award five outstanding high school seniors from rural Wisconsin each with a \$3,000 scholarship. Only online applications will be accepted. For the application, and for more information, please visit www.wrof.org.

Some of the criteria that will be used when choosing students:

- The high school senior has lived in rural Wisconsin for at least two years. "Rural" is defined as traditional rural areas and rural towns with a population of 25,000 or less.
- The high senior is attending a public or private school in Wisconsin.
- The high school senior is pursuing post-secondary education and plans on re-
turning to rural Wisconsin upon graduation.
- The high school senior will pursue a degree in a field that will support the eco-
nomic health and well-being of rural communities in Wisconsin. This in-
cludes fields in agriculture, healthcare, large animal veterinary care, en-
vironmental studies, and sustainable practices.
The high school senior has financial need.

Three letters of recommendation are requested and help in the selection process, but are not required.

Selection will be completed by an ad hoc committee.

The scholarship award will support tuition and educational expenses, up to \$1,500 per semester, and will continue if a 2.5 GPA is maintained.



WISCONSIN

4-H FOUNDATION

Wisconsin 4-H Foundation Higher Education Scholarship Opportunities

The Wisconsin 4-H Foundation will award more than \$20,000 in scholarships to outstanding Wisconsin 4-H members and alumni pursuing higher education in 2024. To be considered for financial support, applications will be accepted starting December 15, 2023, and must be received by the Wisconsin 4-H Foundation via email by Friday, March 1, 2024, 5:00 pm.

Wisconsin 4-H Foundation scholarships are awarded to students based on demonstrated personal growth through 4-H, development and leadership in 4-H, academic performance and future educational goals.

To be eligible for Wisconsin 4-H Foundation scholarships students must have been a Wisconsin 4-H member for at least three years; should have a grade point average of at least 2.5 on a 4.0 scale, and be enrolled or planning to enroll at a university, college or technical school during the 2024-2025 academic school year. Scholarship winners from previous years are not eligible to receive a second 4-H Foundation scholarship.

All applications must adhere to the conventions outlined below. Any application that does not meet these requirements will not be considered. All documents must be emailed to the 4-H Foundation as one, two-page PDF. Any other cloud/internet shared documents will be NOT be accepted (do NOT use Google Docs, for example).

The application materials represent what youth may be asked to submit when applying for jobs. We encourage applicants to treat this process as if applying for a position. For help with creating cover letters and résumés, applicants should reach out to their club leaders, county educator or a teacher or parent.

Applications must be emailed to scholarships@Wis4HFoundation.org. Applications will consist of a résumé and a cover letter. These two documents must be saved as one, two-paged PDF with page one the cover letter and page two the résumé.



AgSource
Cooperative Services

A subsidiary of Cooperative Resources International

DHIA Polk-Burnett Scholarship

These scholarships will be made available by the AgSource DHIA Foundation for students enrolled in post high school education or planning to pursue post high school education. Each scholarship recipient will receive \$500.00 in scholarships.

Applicant's family must reside in Polk or Burnett Counties or be a present or past member of the Polk-Burnett DHI AgSource.

Preference may be given to students in agriculture related majors and students of farm families. Scholarship proceeds will not be given until student has successfully completed one semester of post high school education and a transcript is sent in showing the semester completion. An applicant may be entering or already enrolled in post high school education programs.

**Applications must be completed by April 1st and turned into the
Extension Office**

**You can find the applications on our website under the 4-H tab “Forms
& Applications,” or at: <https://polk.extension.wisc.edu/4-h-youth-development/forms-and-applications/>**

VALENTINE'S DAY

WORD SEARCH

| | | | | | | | | | | |
|---|---|---|---|---|---|---|---|---|---|---|
| M | C | S | I | L | Q | W | V | X | O | C |
| X | U | H | F | L | O | W | E | R | S | A |
| C | P | Z | E | B | Q | U | E | T | C | N |
| C | I | Y | V | A | N | T | O | K | A | D |
| A | D | C | T | L | R | D | S | I | R | Y |
| R | L | U | K | L | J | T | E | S | D | Q |
| I | O | D | P | O | M | I | S | S | D | K |
| N | V | D | O | O | T | Z | D | T | T | I |
| G | E | L | E | N | K | N | Y | U | Z | N |
| I | Y | E | M | S | E | C | F | S | A | D |
| H | A | R | R | O | W | V | D | A | T | E |
| J | F | F | F | E | B | R | U | A | R | Y |

ARROW

BALLOONS

CANDY

CARD

CARING

CUDDLE

CUPID

DATE

FEBRUARY

FLOWERS

FRIENDS

HEART

HUG

KIND

KISS

LOVE

POEM

ROSES

University of Wisconsin - Extension
Polk County Office
100 Polk Plaza, Suite G600
Balsam Lake, WI 54810
Phone: (715) 485-8600

Presorted Standard
U.S. Postage Paid
Nonprofit
Permit No. 9

February Newsletter



Extension

UNIVERSITY OF WISCONSIN-MADISON
POLK COUNTY

The University of Wisconsin-Extension provides Title IX requirements, which include affirmative action and equal opportunity, religion, national origin, ancestry, age, sexual orientation, pregnancy, marital or parental status, arrest or conviction record or veteran status.
Requests for reasonable accommodations for disabilities or limitations should be made prior to the date of the program or activity for which it is needed. Please do so as early as possible prior to the program or activity so that proper arrangements can be made. Requests are confidential (ADA requirements).